

 **The National Archives**

The image shows the exterior of The National Archives building. A prominent curved sign on the upper level of the building reads "The National Archives" in a dark, sans-serif font. The building features large glass windows and several white cylindrical columns. The sky is a clear, bright blue.

# The National Archives

Archives Inspire –  
Changes to the first floor 2016-17

**Lee Oliver**

22 November 2016

# Archives Inspire

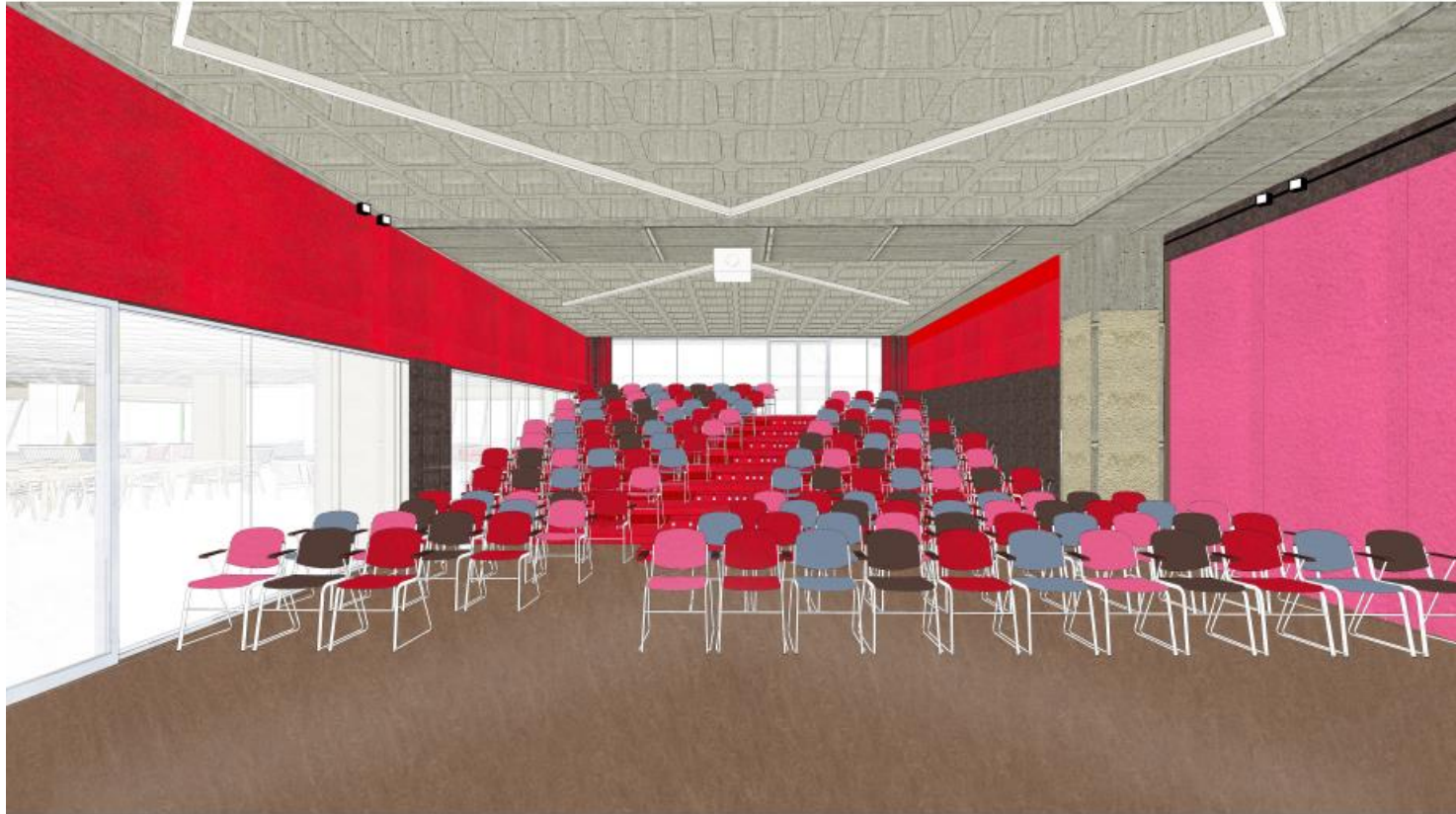
**“We will inspire the public with new ways of using and experiencing  
our collection”**

Re-imagine our Kew site as a vibrant, welcoming, learning environment

# A new events space

- Multi-purpose, flexible space(s) which can seat up to 250 people
- Strategic focus on education and learning, building on a solid foundation, in line with cultural white paper
- Caters for a variety of audiences, including: school children; families; adult learners; serious researchers and academics; external stakeholders; and more
- Allows us to hold more ambitious and more professional events and activities
- Begins to repurpose the space in the Research & Enquiries Room which is ripe for reuse, with minimal knock-on impact
- Releases the current Talks Room to be a second learning space (before full redevelopment at a later phase)

# Events Space – interior view

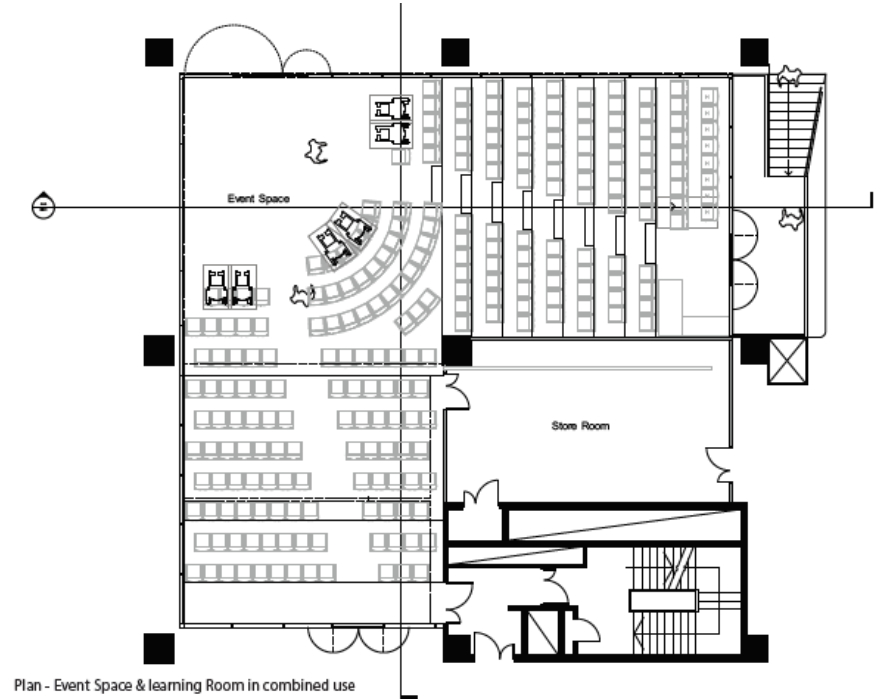
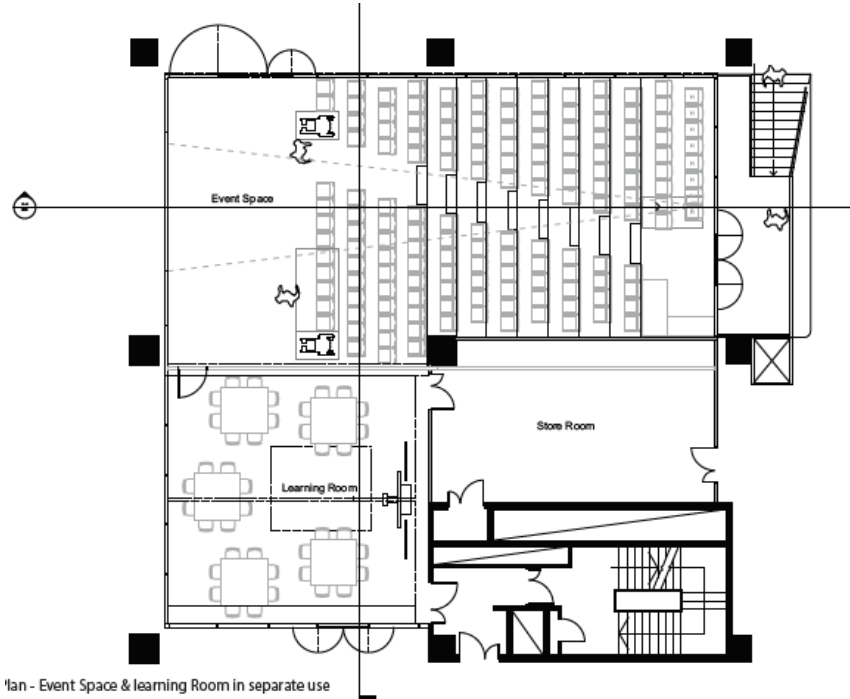


# Events Space with adjoining space

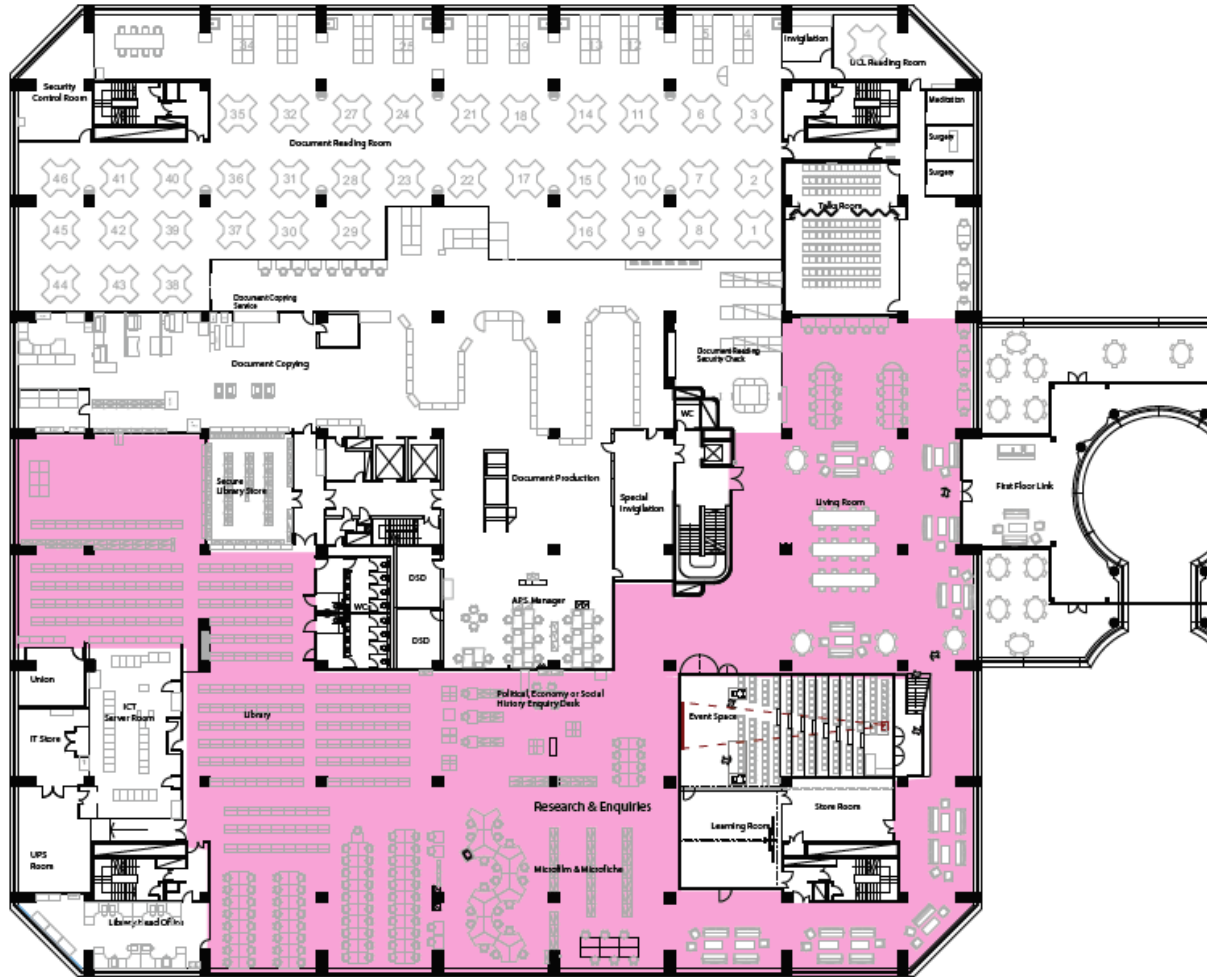




# Flexible, multi purpose space



# Events Space – Location





# Events Space – view from the Balcony Cafe

