

THE TIME TRAVEL PACK

Name :



**THE
TIME TRAVEL
CLUB**



Hello! My name is Vic and I am visiting The National Archives. I want to explore and learn about the special treasures that are kept here. Visit my friends on each page to learn fun facts and see if you can answer all the questions.



At The National Archives our special treasures are called documents. They are kept safe in rooms called repositories. Documents are kept in boxes with codes to help us find them.



There is a **secret message** hidden in the archives. Your helper has the special symbols to unlock the message. Collect them when you answer the questions correctly.



1

Look at the image below of a sign inside The National Archives. What does the sign call this building? Hint: read line two.



TR _ _ S _ R _
H _ _ S _



Talk to your helper:
What kind of treasure
do you think we have?

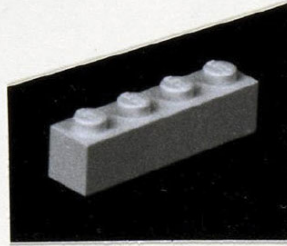
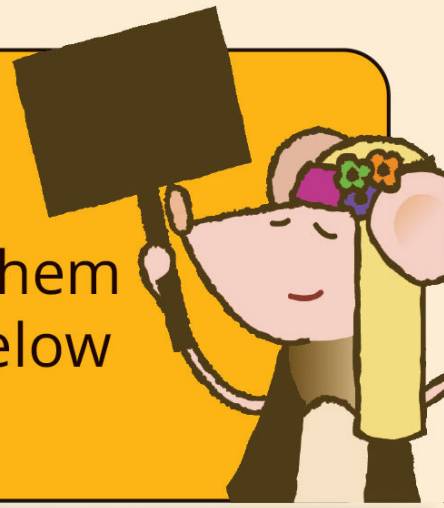


SYMBOLS:

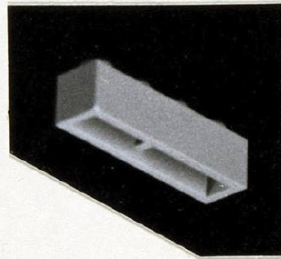
2

Hi, I am Emi.

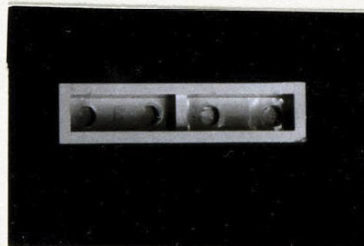
It is now time to look at some treasures (remember we call them documents). The document below is from the time I come from.



PERSPECTIVE VIEW OF ONE SIDE AND END FROM ABOVE.



PERSPECTIVE VIEW OF OPPOSITE SIDE AND END FROM BELOW.



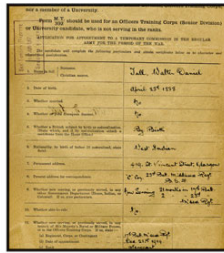
INVERTED PLAN VIEW.



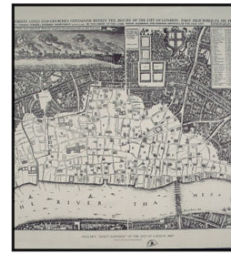
What type of document is this?
Draw a circle around your answer.



Poster



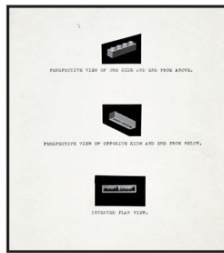
Form



Map



Wax seal



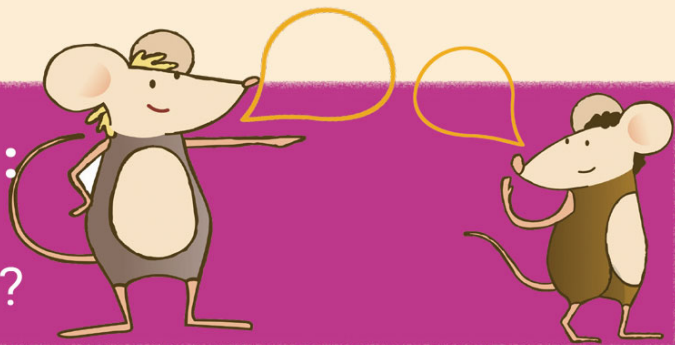
Design



Photograph



Talk to your helper:
What famous toy is
this document about?



SYMBOLS :



3



Hi, I am Cedric.

This is a document from the time I come from.

1

NOTED ON
24/2/17 J.
M.T.
Form M.T
393

This Form is to be used for any candidate who is serving in the ranks of the New Armies, Special Reserve, or Territorial Force, and for any other candidate who is neither a cadet or ex-cadet of the Senior Division, Officers Training Corps, nor a member of a University.

3

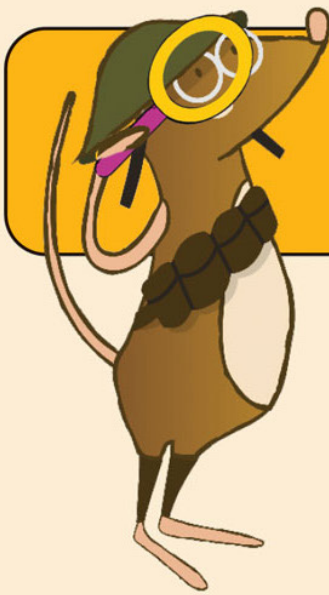
Form M.T. 392 should be used for an Officers Training Corps (Senior Division) or University candidate, who is not serving in the ranks.

1 JUN 1917
SPECIAL RESERVE
APPLICATION FOR APPOINTMENT TO A TEMPORARY COMMISSION IN THE REGULAR ARMY FOR THE PERIOD OF THE WAR.

The candidate will complete the following particulars and obtain certificate below as to character and educational qualification.

2

1. Name in full { Surname. Christian names.	Jull, Walter Daniel
2. Date of birth.	April 25 th 1888
3. Whether married.	no
4. Whether of pure European descent.	no.
5. Whether a British subject by birth or naturalization. (State which, and if by naturalization attach a certificate from the Home Office.)	-By Birth
6. Nationality by birth of father (if naturalized, state date).	West Indian



Look at the arrows.
What can you work



1

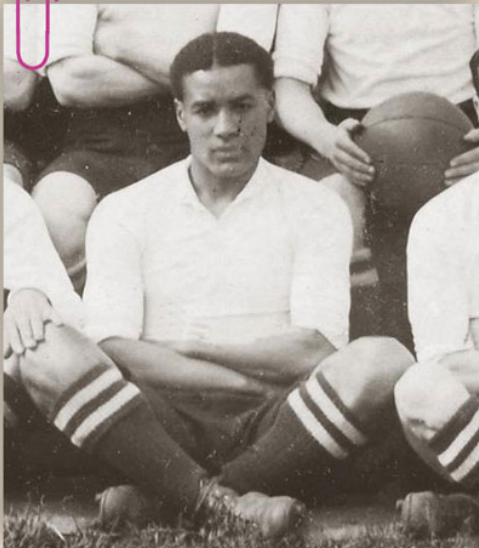
When was it made?

2

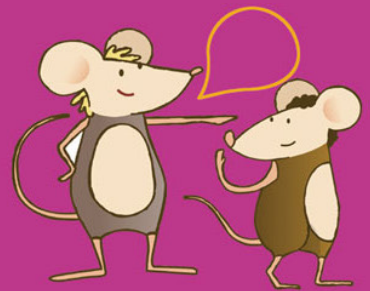
What was their name?

3

What was their job?



Talk to your helper:
Look at the photograph.
This person had another
job before the war.
What do you think it
was?



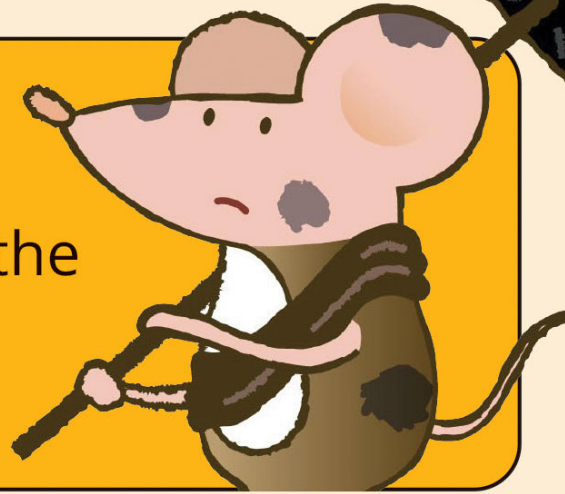
SYMBOLS :



4

Hi, I am Evelyn.

This is a document from the
time I come from.



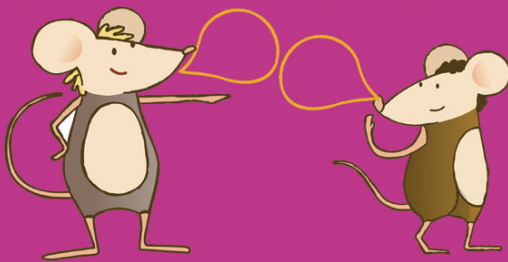


Write down two things you notice about this person.

1



2



Talk to your helper:
Look at this part of the document.
What did this person steal?



Offence for which convicted

*Simple Larceny S.O.A.
Stly 2 live tame rabbis*

SYMBOLS :



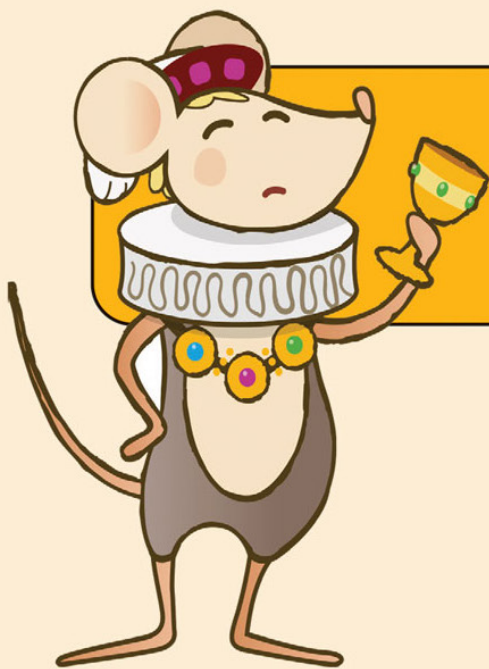
5



Hi, I am Francis.

This is a treasure
from the time
I come from.





Which of these can you spot?
Draw a circle around your answer.



Rose



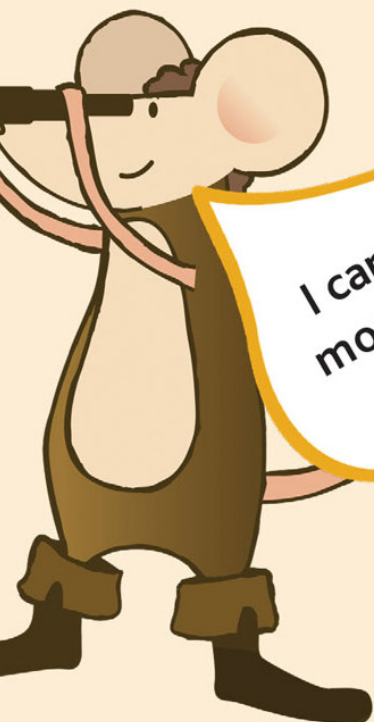
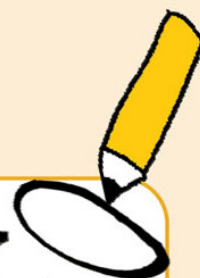
Dragon



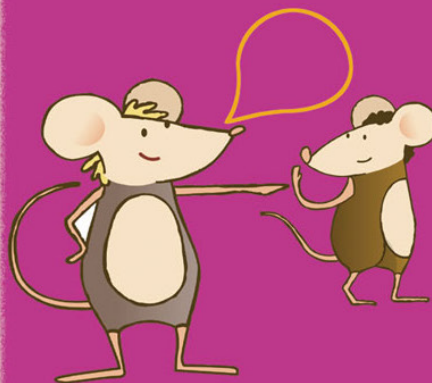
Lion



Cross



I can see
more than
one!

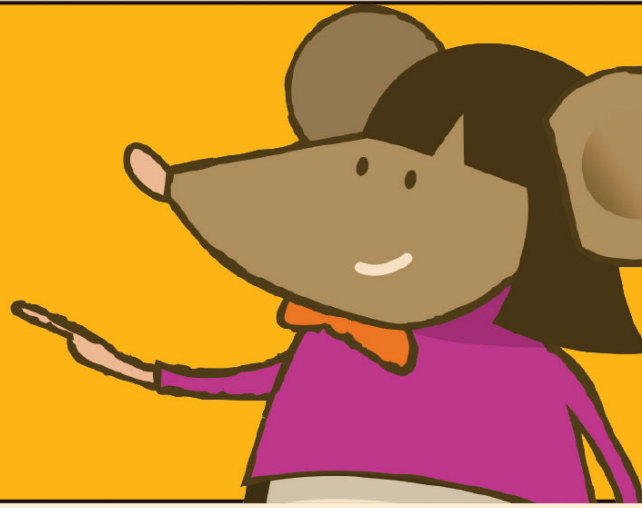


Talk to your
helper:
What do you
think this
document was
used for?

SYMBOLS :



Thank you for exploring
The National Archives with me!
It is time to unlock the secret
message. You will need to use
the Tudor cipher on Activity
card 1 in your pack.



//							

Symbol
Letter



Use the Tudor cipher to write your name!



Thank you for downloading the The National Archives' Time Travel Club Pack. This card contains the answers and secret symbols you'll need to show players.

Join Vic and friends on an exploration of The National Archives to learn all about the types of documents that are kept there, fun facts and to de-code a secret message.

Your role as a helper is to guide players through the activity pack, helping them to answer the questions, complete the activities and reveal the secret symbols associated to the page you are working on.

Look at page two of this card. You'll find the correct answers and the secret symbols (written in order). The dashed lines indicate where you may want to fold the page to keep the secret symbols hidden.

The Time Travel Club is The National Archives' programme for ages 0-18, co-ordinated by our education team. All members of the team are qualified teachers, and run a variety of events throughout the year. From storytelling sessions and craft clubs, to themed workshops and take-over days. Find out more and discover our free resources at:

www.nationalarchives.gov.uk/education/

Q1: TREASURE HOUSE

Talk to your helper: Answers can include: Maps, pictures, important certificates or documents, war records, speeches, letters, music.

Symbols: // f ∞ ↻

Q2: Design

Talk to your helper: Lego.

Symbols: ⊥ π ċ ≠

Q3:

a) June 1917 b) Daniel Walters c) Served in the Army

Talk to your helper: Footballer.

Symbols: // f ċ

Q4: Answers can include: he looks unhappy, is wearing a number, the picture looks old, is wearing a thick coat.

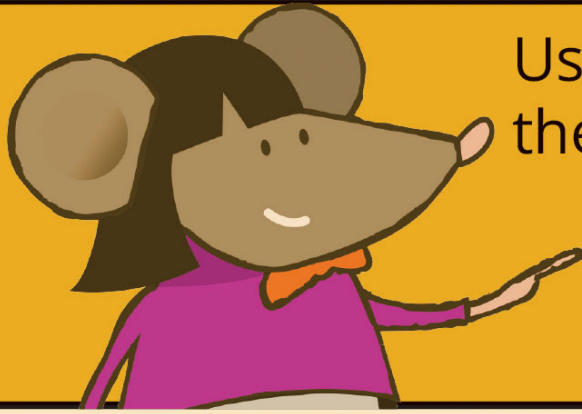
Talk to your helper: Rabbits.

Symbols: // † // †

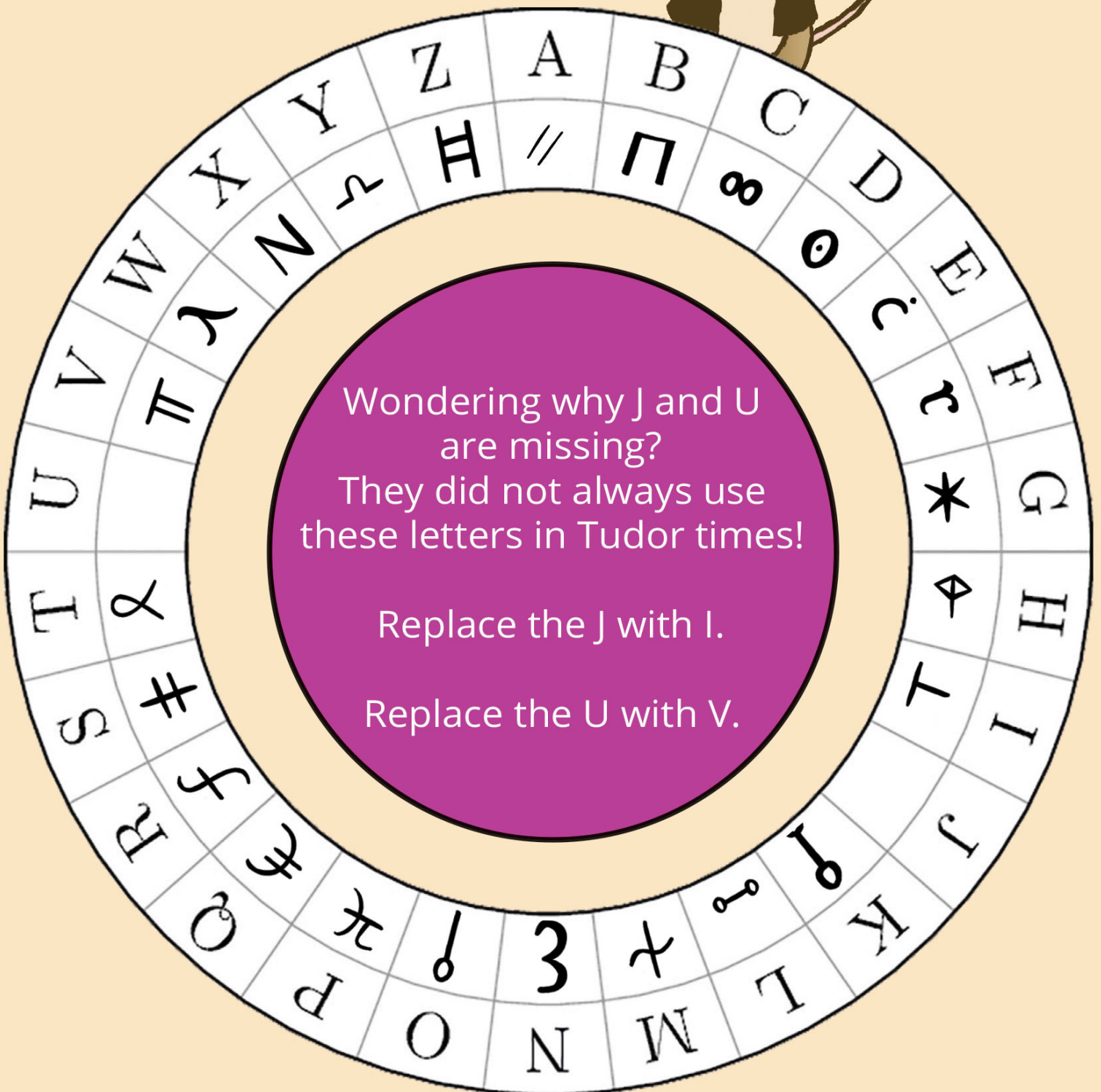
Q5: Rose and Cross

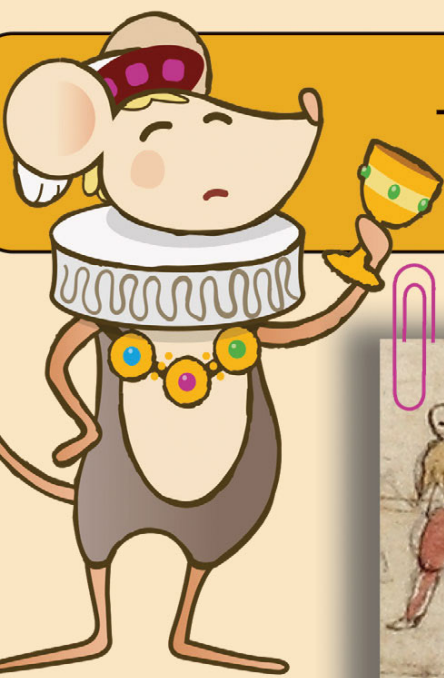
Talk to your helper: To verify the sender of a letter or document and prove it had not been opened.

Symbols: H ⊥ ε *



Use the key code to unlock the secret message!





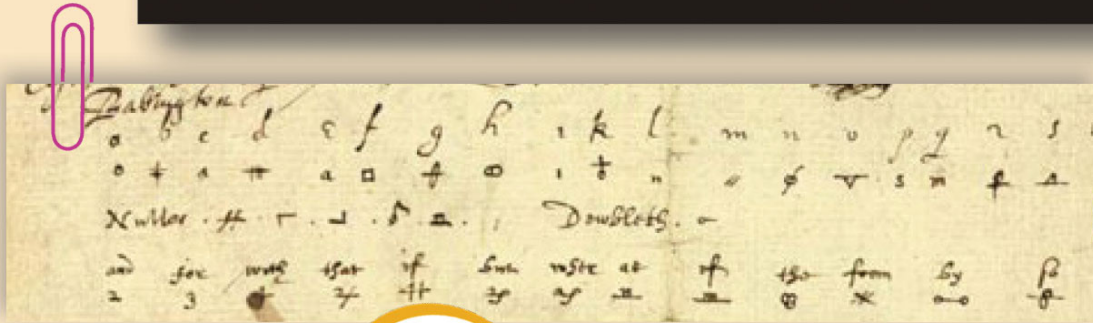
This is Mary, Queen of Scots!



Mary was Queen of Scotland. Even though she was Elizabeth I's cousin, they were great enemies.



Anthony Babington, who secretly supported Mary, planned to kill Elizabeth I and make Mary the Queen of England. Babington wrote a letter setting out his plan. He used a secret code because the plan was so dangerous...it is the exact code you used in your secret message!



This is really hard to read!



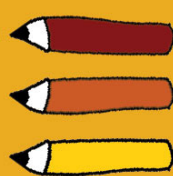
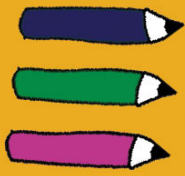
Off with her head!



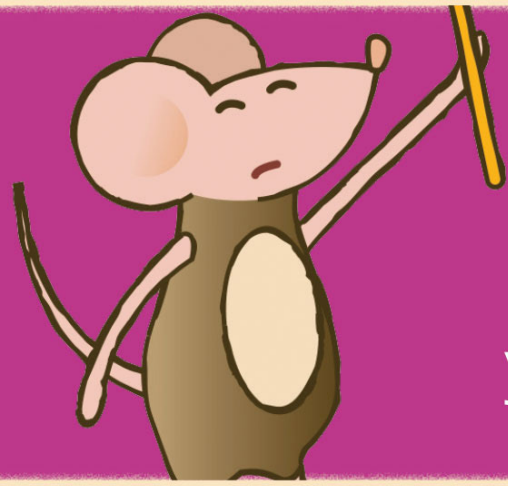
However, it didn't go to plan for Babington. Mary replied and her letter fell into the hands of Elizabeth I. Mary was put on trial and the letters were used as evidence of her guilt. She was beheaded in 1587.

Activity card 2

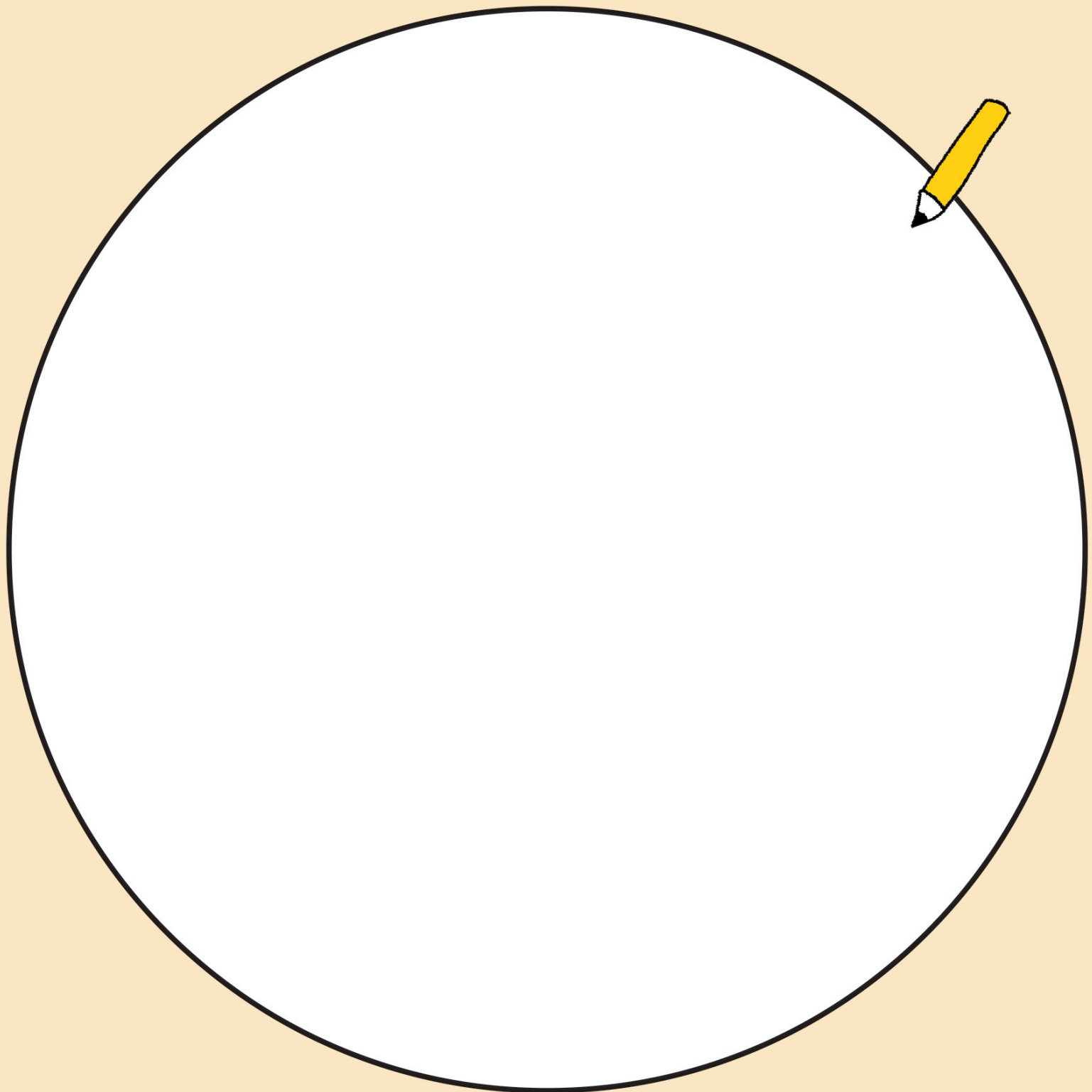
Colour in the
wax seal!



This is a greyhound. This image was used to show that King Henry VIII was loyal and a good hunter!



Design your own seal
Draw images that show your personality. For example if you like to read, draw a book.



Word search

Find all the hidden words.



J	X	G	E	U	F	E	R	T	A	B	C	T	C	U
E	X	E	G	L	V	Q	J	I	V	M	P	N	P	K
I	R	N	C	I	C	T	V	M	N	H	F	E	G	J
C	D	U	H	N	P	J	Z	E	O	S	A	M	F	J
X	I	C	S	L	T	S	F	T	X	N	M	U	E	U
L	R	P	H	A	Z	I	O	R	E	P	I	C	Z	P
A	R	J	H	C	E	G	F	A	O	Z	L	O	L	D
F	B	J	F	E	R	R	T	V	Q	H	Y	D	O	L
M	J	W	F	A	R	J	T	E	S	U	O	M	L	O
L	P	S	P	E	C	I	A	L	E	I	J	D	T	Z
A	A	H	H	S	O	M	N	M	D	L	X	U	T	F
P	K	E	K	X	Z	C	E	I	O	Z	D	S	H	G
P	J	H	S	V	J	N	Q	Q	P	O	D	A	Y	M
N	A	I	R	O	T	C	I	V	R	M	E	Y	K	G
T	Y	N	Q	O	S	R	A	E	C	K	Q	I	X	F

ARCHIVE

MOUSE

TIMETRAVEL

CIPHER

PHOTOGRAPH

TREASURE

DOCUMENT

SEAL

TUDOR

FAMILY

SPECIAL

VICTORIAN



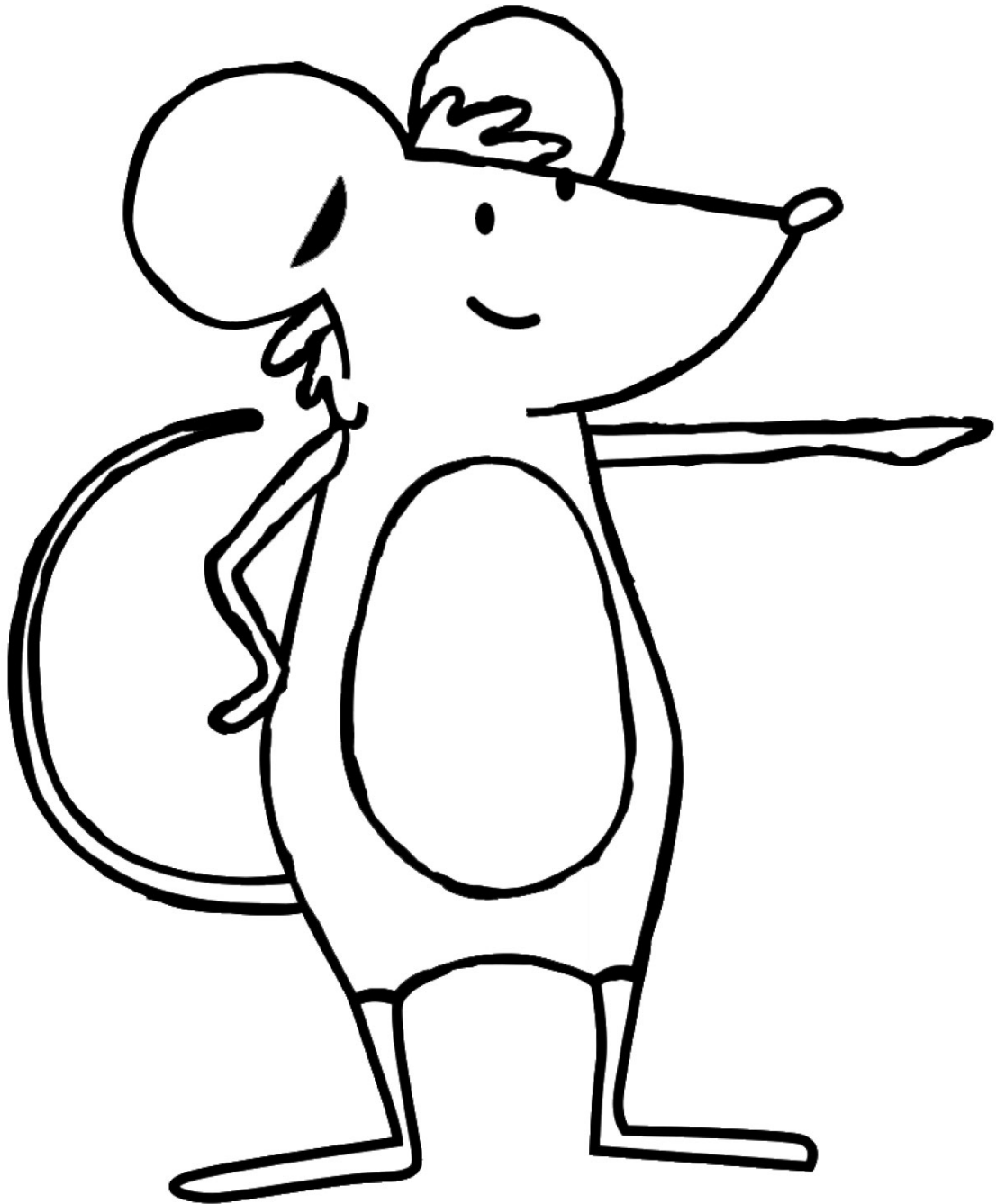
Spot the difference

Draw a circle around all 10 differences on the bottom image.

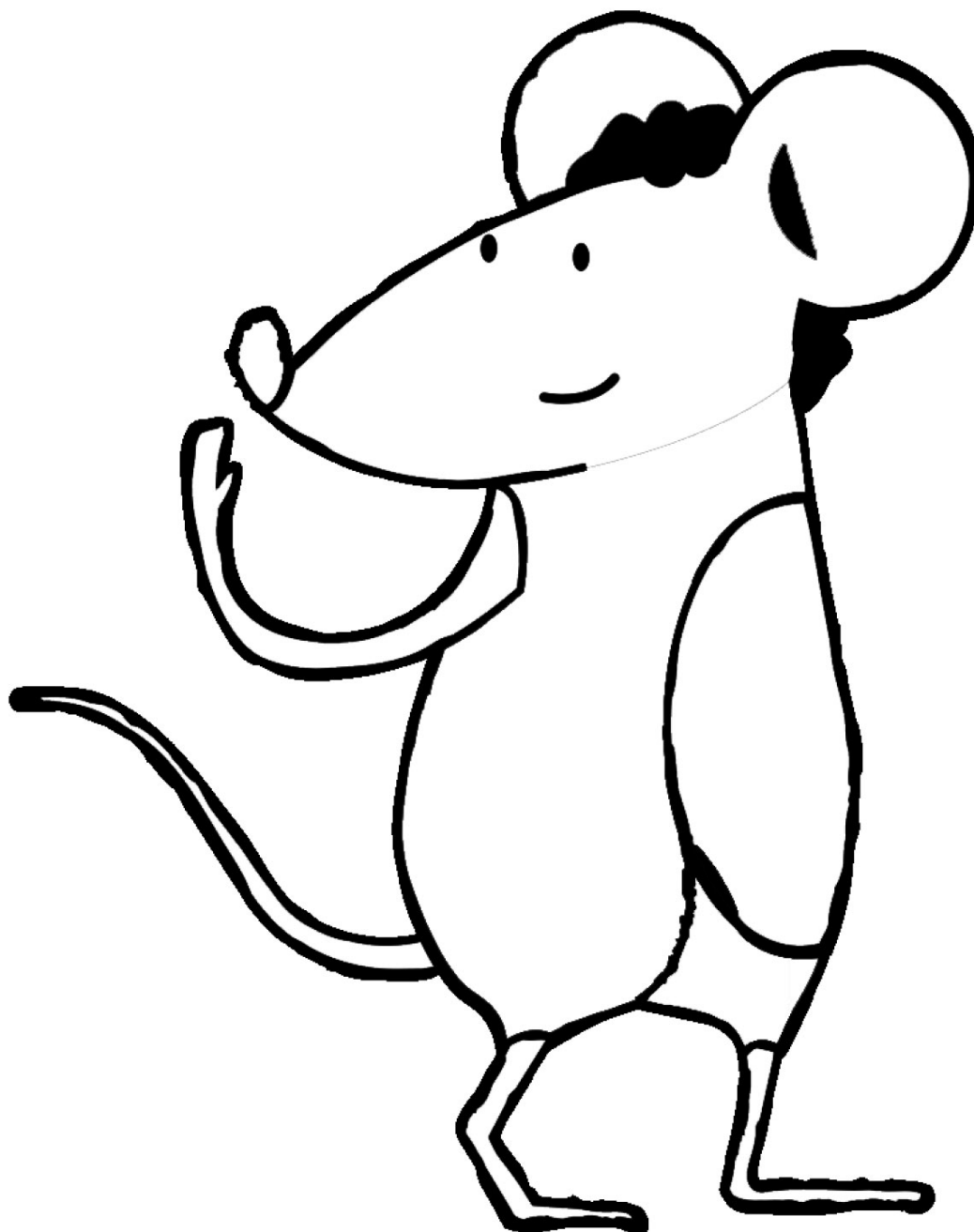


THE	
NATIONAL	
ARCHIVES	

Colour me in!



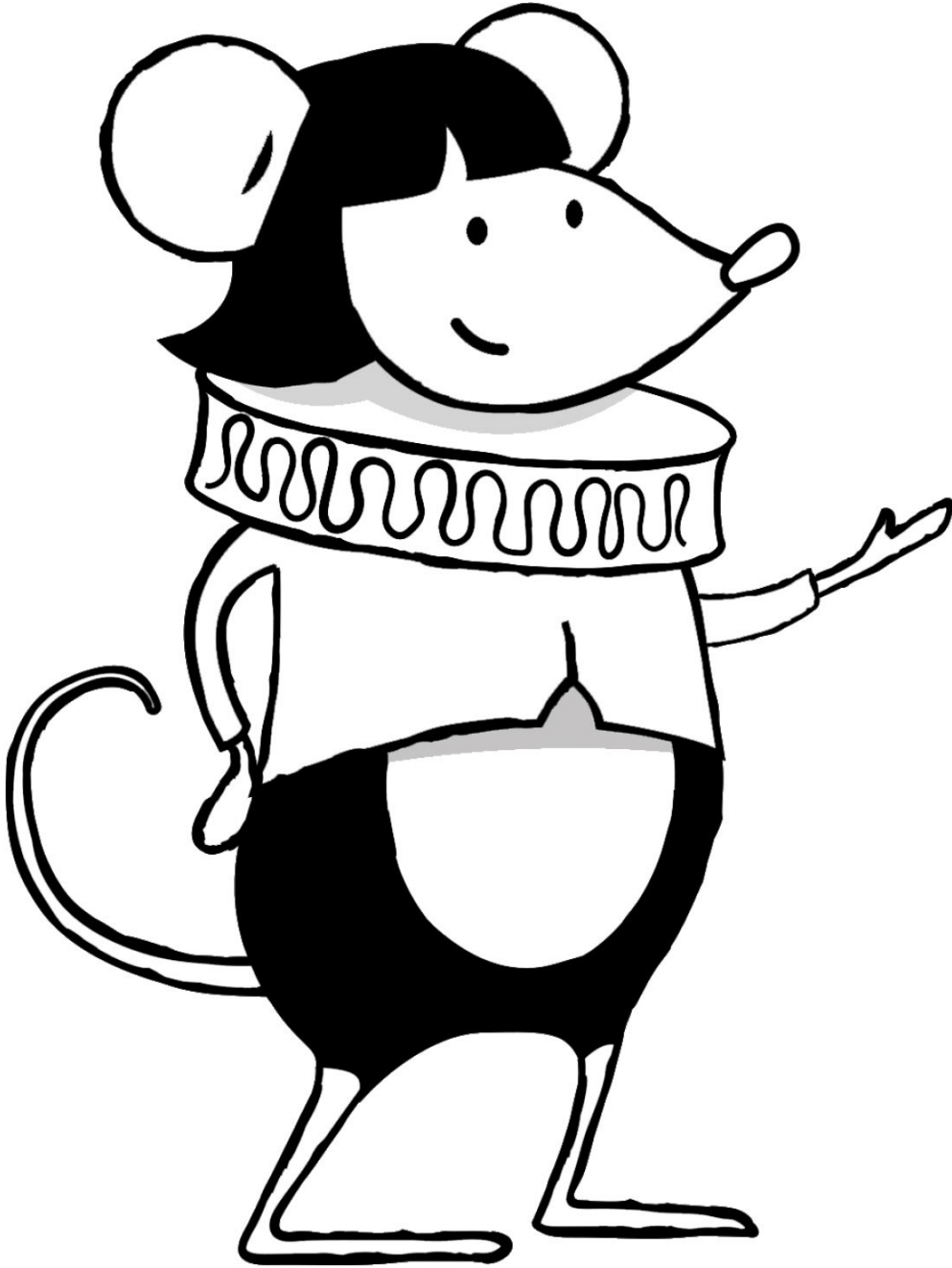
Colour me in!



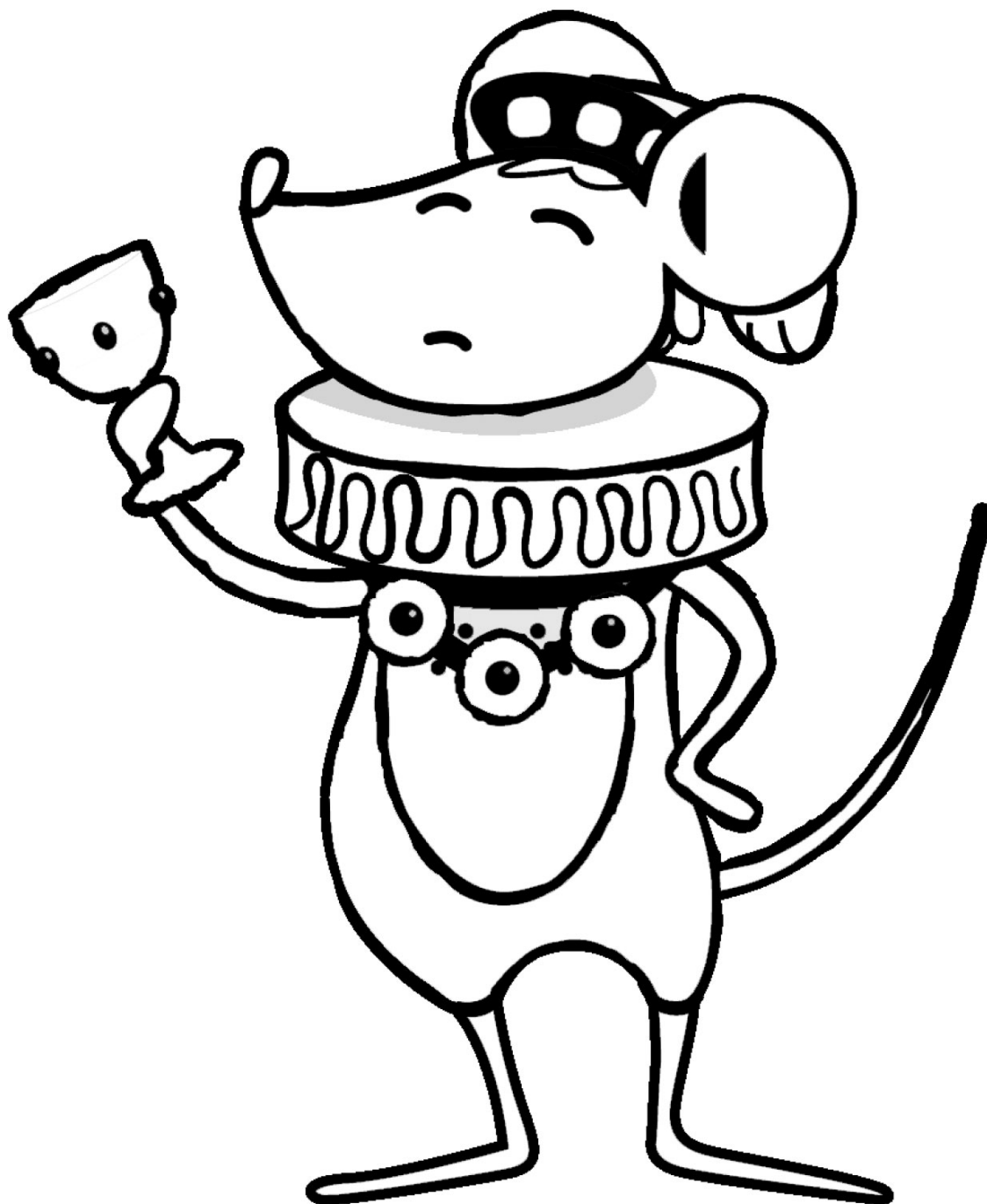
Discover more activities and resources at:
www.nationalarchives.gov.uk/education/

THE	
NATIONAL	
ARCHIVES	

Colour me in!



Colour me in!



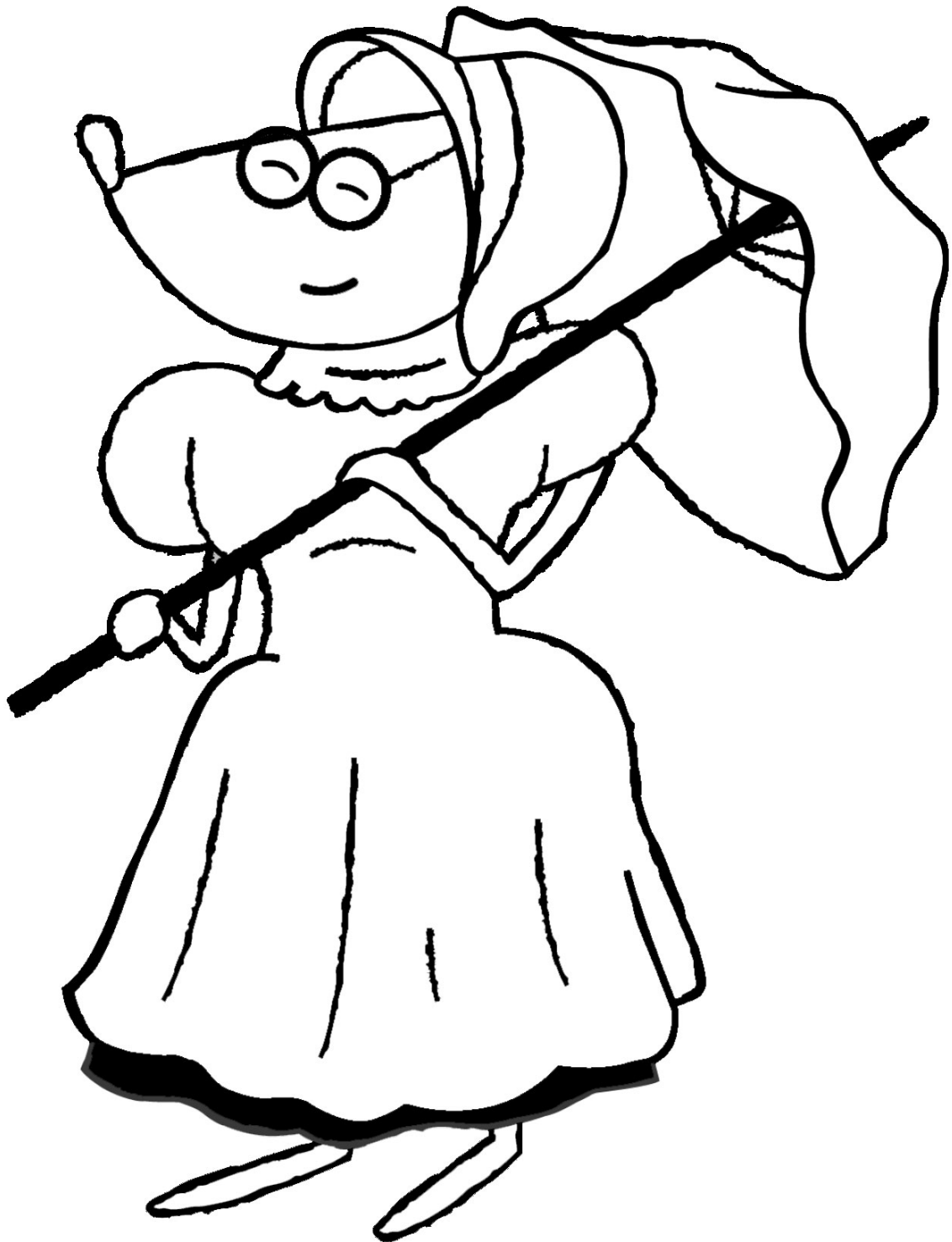
Discover more activities and resources at:
www.nationalarchives.gov.uk/education/

THE	
NATIONAL	
ARCHIVES	

Colour me in!



Colour me in!



Discover more activities and resources at:
www.nationalarchives.gov.uk/education/