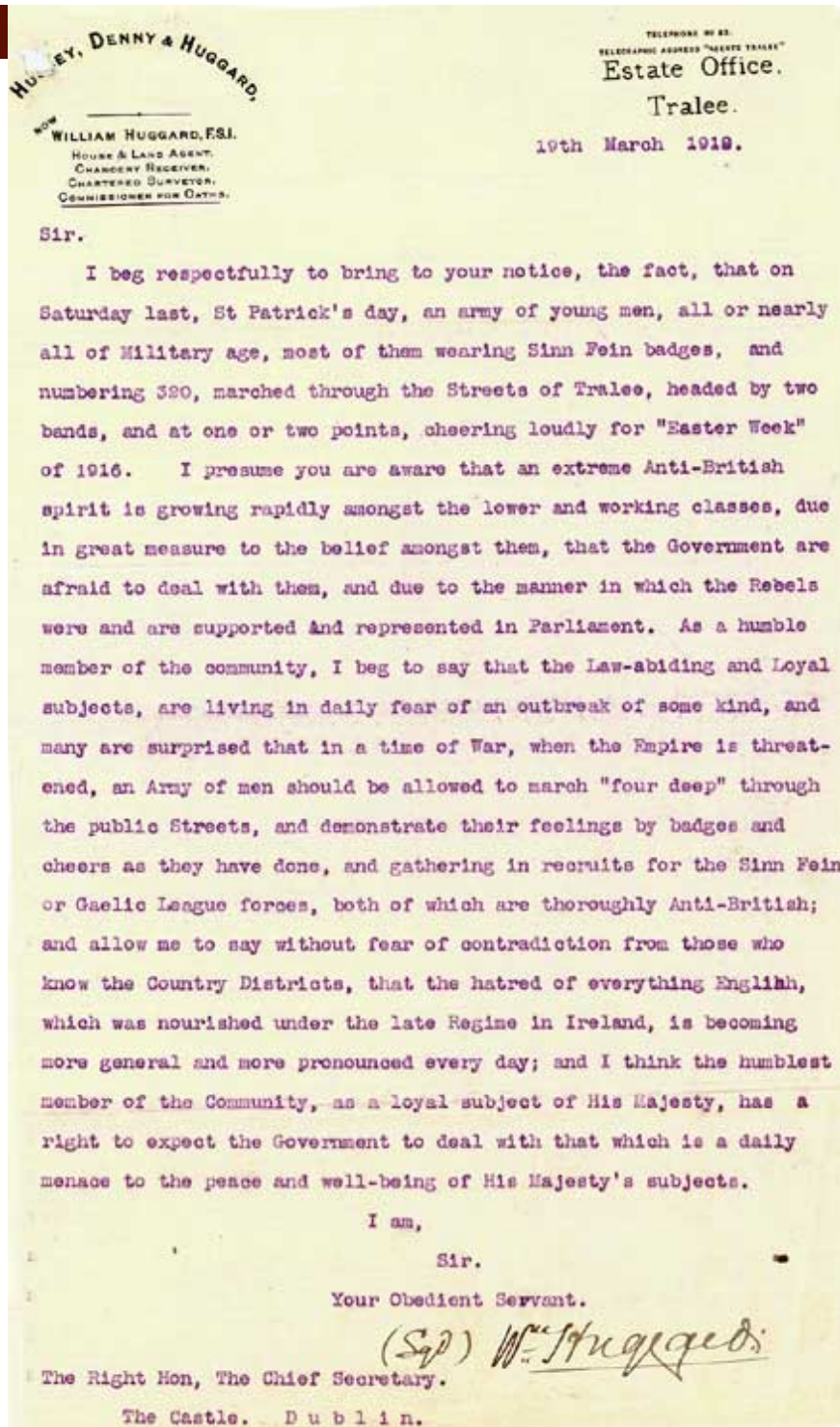


[Home](#) > [Gallery](#) > [Case Study](#) > Source[Search this exhibition](#) [Print](#)

SOURCE EIGHT

[Transcript](#) | [Useful notes](#)

Letter from a land agent in Tralee to the British government in Dublin on opinions in Ireland towards the British, 1919
(PRO ref: PREM 1/231)



How to use this source

1 Study this source carefully. Ask yourself whether the source supports or contradicts the view that:

- The British left as soon as the people wanted them to
- The British left because of the actions of important individuals
- The British were forced out by peaceful political protests
- The British were forced out by armed resistance
- The British wanted to leave because the area was causing them problems
- The British left because they felt the country was ready to rule itself democratically

2 If you were an **admirer** of the British empire, explain whether you would be able to use this source to support your viewpoint.

3 If you were a **critic** of the British empire, explain whether you would be able to use this source to support your viewpoint.

4 What does this source suggest about the organisation of Sinn Fein?

[Background](#) | [Worksheet](#)[Feedback](#) | [Credits](#) | [Sitemap](#) | [Help](#)[Glossary](#) | [World Maps](#)