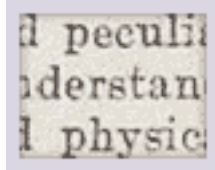
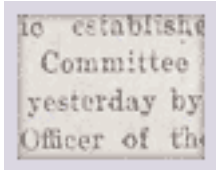


SOURCE 8

Extract from an article in 1915 on new school medical clinics

(PRO ref: MH 139/2)



SOURCE 8A

SOURCE 8B

HOW TO USE THIS SOURCE TO HELP YOU ANSWER THE BIG QUESTION :

You need to study the source carefully before you decide whether it supports or contradicts any of the reasons in the Big Question.

ASK YOURSELF:

- What event is being described in the article?
- Was Birmingham taking the introduction of school medical clinics seriously?
- Is there any evidence in this source that Birmingham's attitude to school clinics was normal or exceptional?
- What does the following phrase mean: 'education was not merely confined to the three Rs' ?

SERIOUSNESS OF "MINOR" AILMENTS.

WHAT BIRMINGHAM IS DOING FOR ITS CHILDREN.

NEW CLINIC OPENED BY SIR GEORGE NEWMAN.

The new central clinic established by the Birmingham Education Committee in Great Charles Street was opened yesterday by Sir George Newman, Chief Medical Officer of the Board of Education. The clinic, which was fully described in a recent issue of the "Daily Post," is the eighth established by the Birmingham Education Committee, and completes a scheme for supplying with a clinic each of the eight districts into which the city has been divided for school medical inspection purposes. Erected and equipped at a cost of nearly £4,000, it is arranged on comprehensive lines, and includes a department for the X-ray treatment of ringworm.

BEST IN THE COUNTRY.

Sir George Newman began his address by complimenting the Birmingham Education Committee upon the thoroughness with which they had taken up the work of medical treatment of school children.

SOURCE 8B

BIRMINGHAM'S COMPREHENSIVE SCHEME.

Birmingham had, of course, been the home of a great many social and philanthropic movements in the past, and it was right and fitting it should become the home in a peculiar sense and peculiar degree of this new thought, of this new understanding of the importance of laying a sound physical basis as the foundation of all true education. They were beginning to realise that education was not merely confined to the three R's, and that unless they based it upon the harnessing and controlling of the body they were going to limit a great deal of subsequent education. He admired and took a great interest in the work in Birmingham for several reasons. In the first place their scheme was so comprehensive—more comprehensive in some ways than in any other town he knew of. They had an effective, though not a complete, scheme for the maintenance of personal cleanliness; they had a feeding scheme and one of the earliest schemes of special schools; and they had, at Uffculme and the