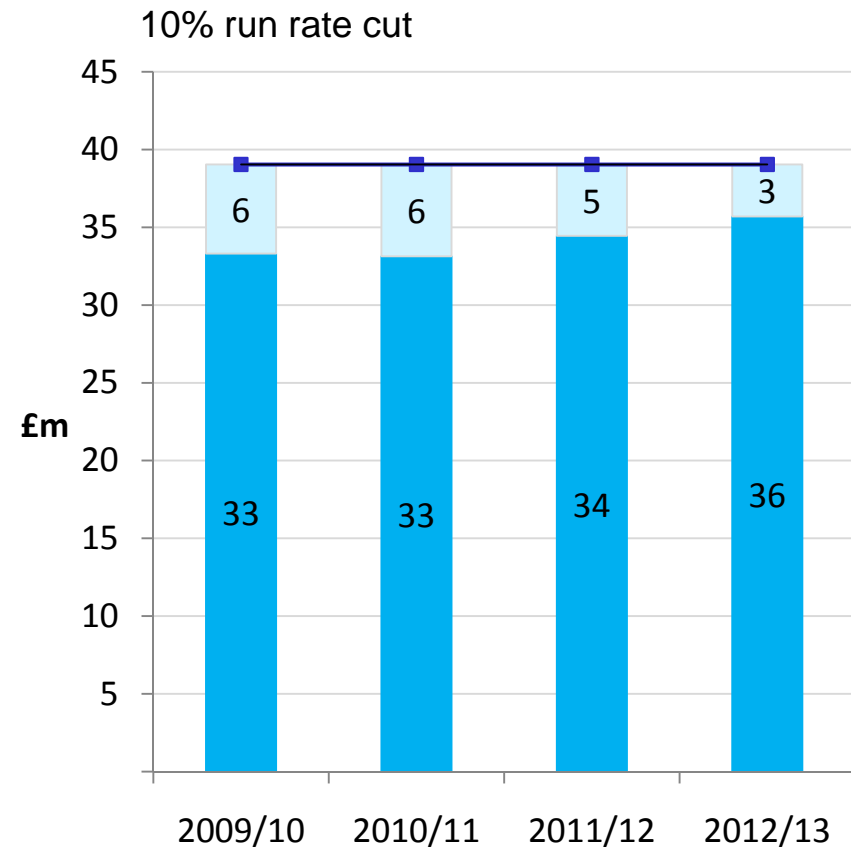
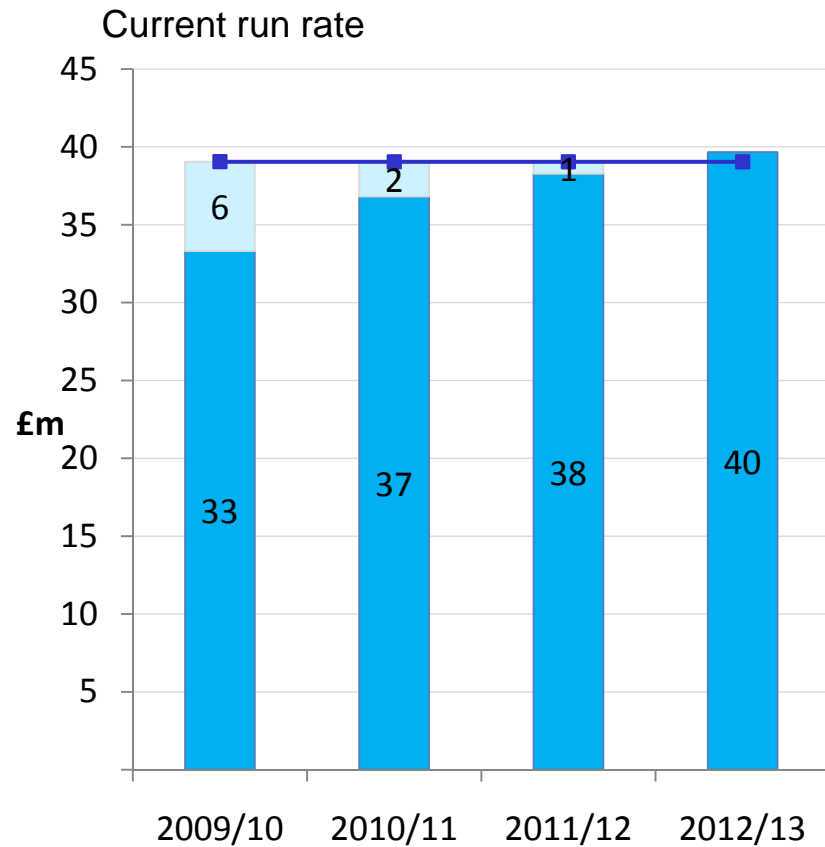
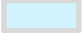




The National Archives Budget 2009 / 10



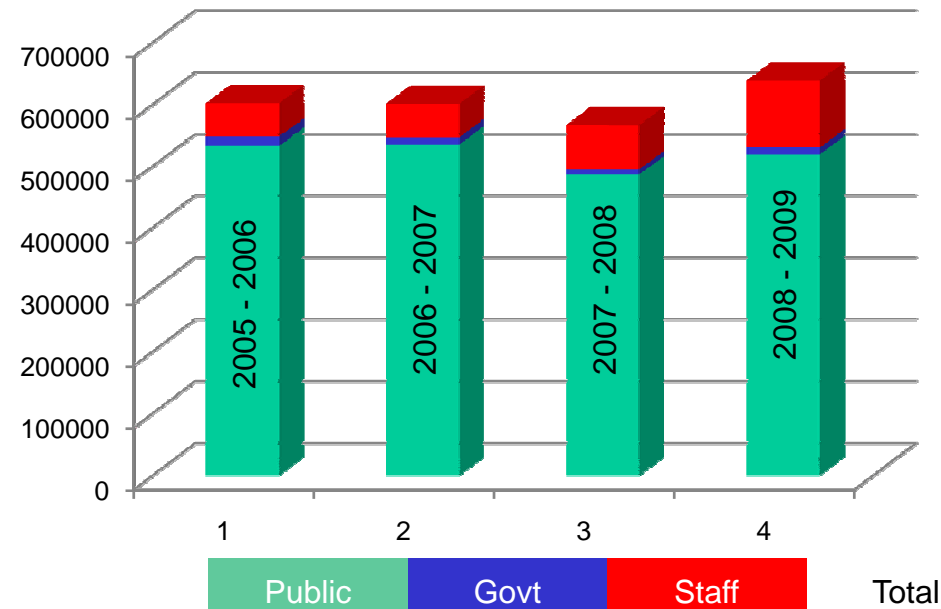
 Investment bids/contingency

 Cash forecast

 CSR



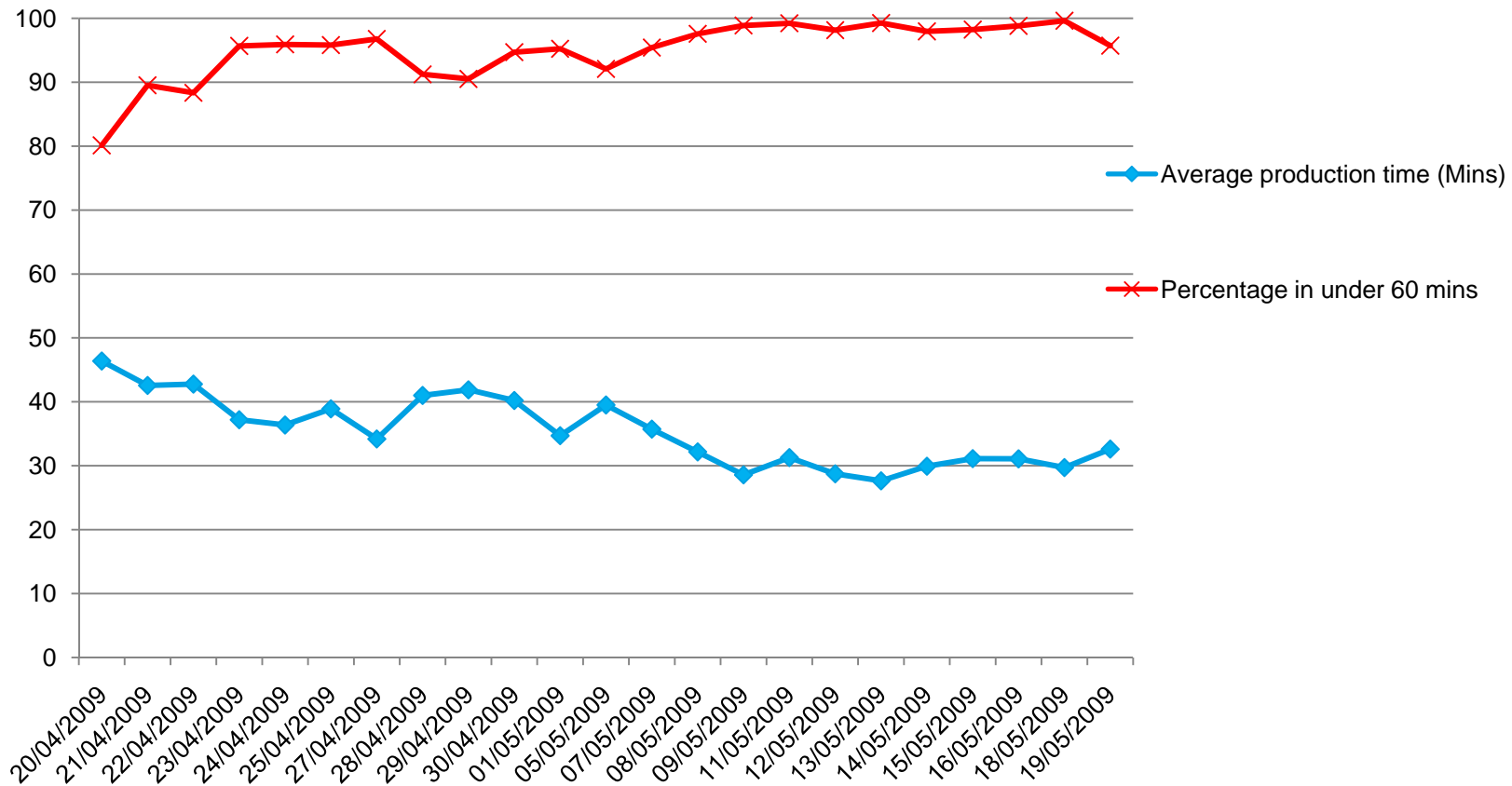
Document Productions since 2005-2006



2005/2006	533,803	15,047	53,379	602,229
2006/2007	535,307	11,648	54,301	601,256
2007/2008				
* 3 week closure as part of Kew 2008. Estimated figure				
600,000	486,593	8,514	72,141	567,248
2008/2009	520,207	10,772	107,665	638,644



Average Production times since 20th April 2009



Times for 19/05/2009 affected by fire drill

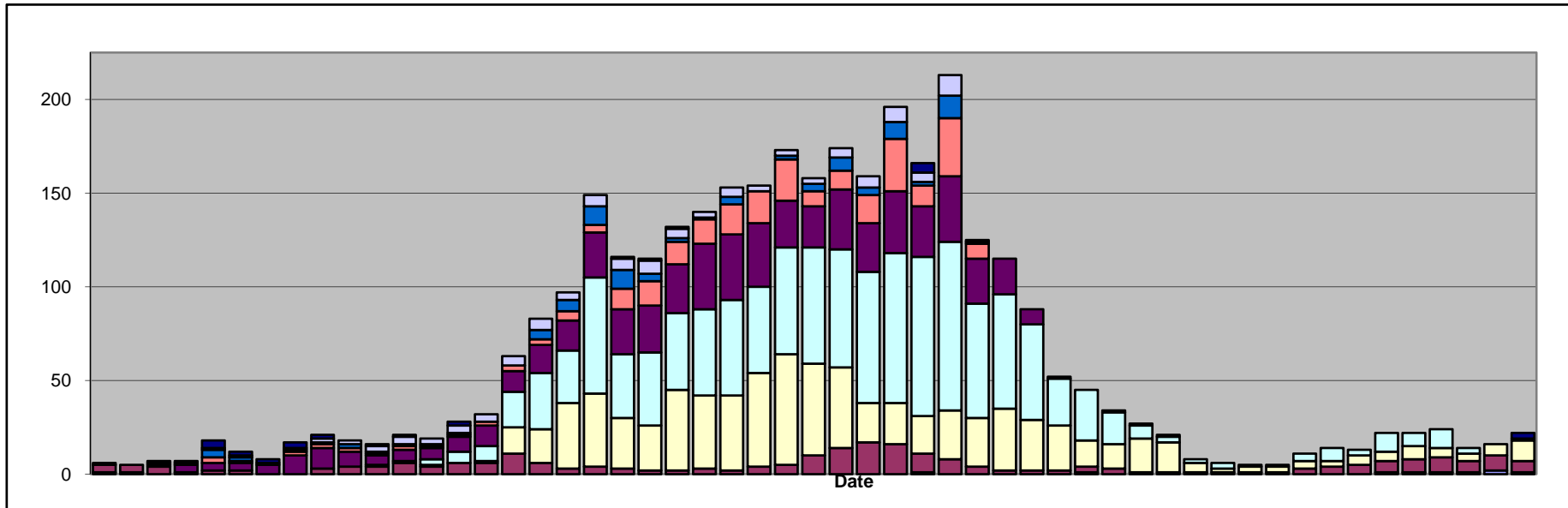


Break down of average production times

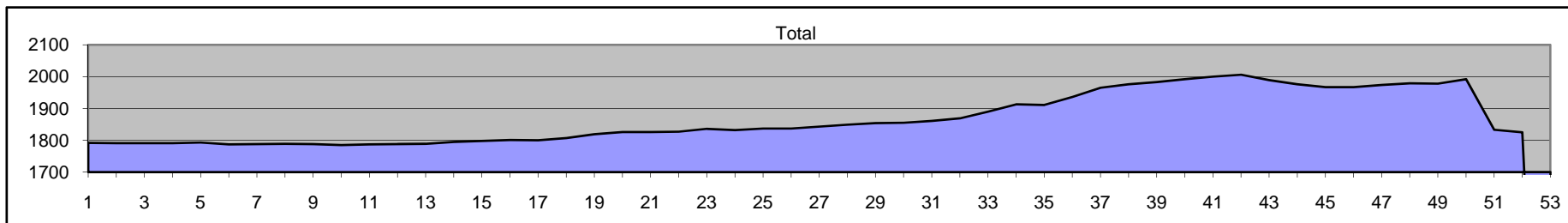
	Average production time (Mins)	Percentage in under 60 mins
20/04/2009	46.39	80.13
21/04/2009	42.57	89.52
22/04/2009	42.77	88.35
23/04/2009	37.2	95.68
24/04/2009	36.38	95.92
25/04/2009	38.91	95.82
27/04/2009	34.2	96.78
28/04/2009	41	91.24
29/04/2009	41.88	90.53
30/04/2009	40.21	94.71
01/05/2009	34.71	95.23
05/05/2009	39.51	92.09
07/05/2009	35.74	95.43
08/05/2009	32.18	97.58
09/05/2009	28.58	98.88
11/05/2009	31.29	99.23
12/05/2009	28.75	98.15
13/05/2009	27.65	99.26
14/05/2009	29.93	97.96
15/05/2009	31.13	98.25
16/05/2009	31.09	98.83
18/05/2009	29.73	99.62
19/05/2009	32.61	95.72



Searches for documents 2008 - 2009

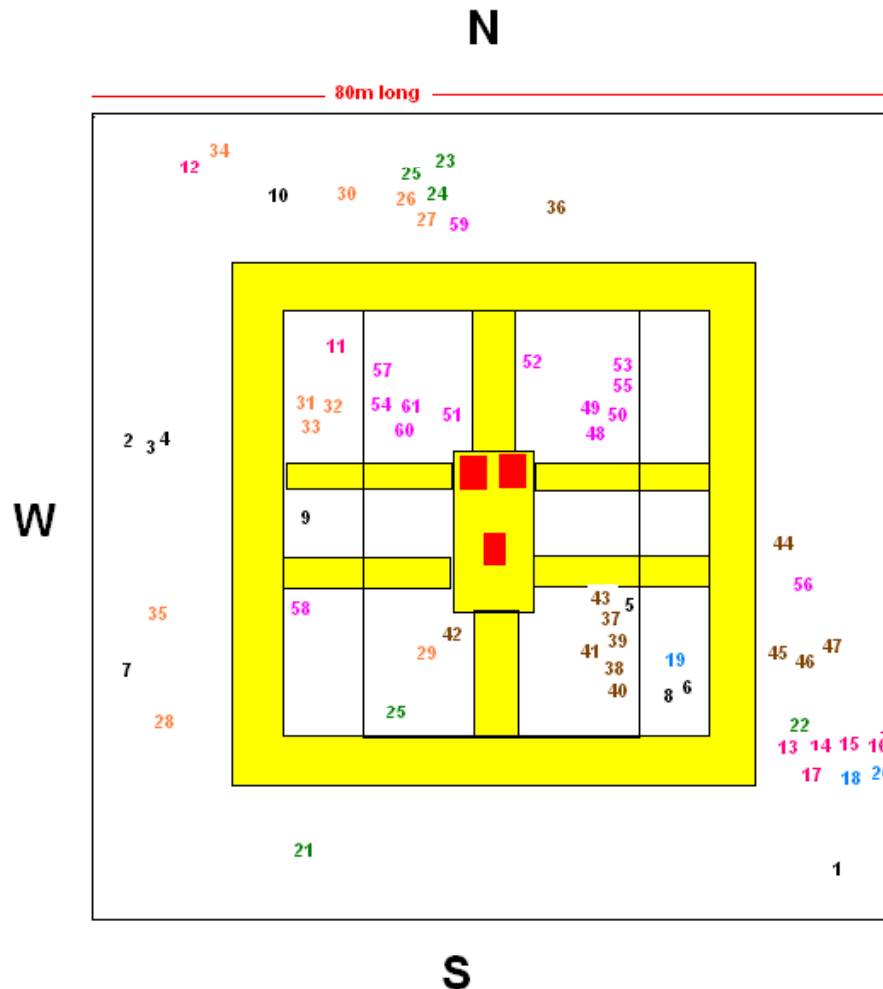


Misfiled documents





3rd floor repository productions



Productions from
12:00 to 12:30 on
7th April 2009.

Production colours are
grouped by 5 minute
intervals

E White areas are
repository storage

yellow areas are
routes

Red areas are
document despatch
units