




Back to the future

David Rhind


Cities Revealed Event 2010



Route map

- The context
- GIS&S contributions real and possible
- APPSI, *Making Public Data Public*, etc
- Conclusions

Cities Revealed Event 2010

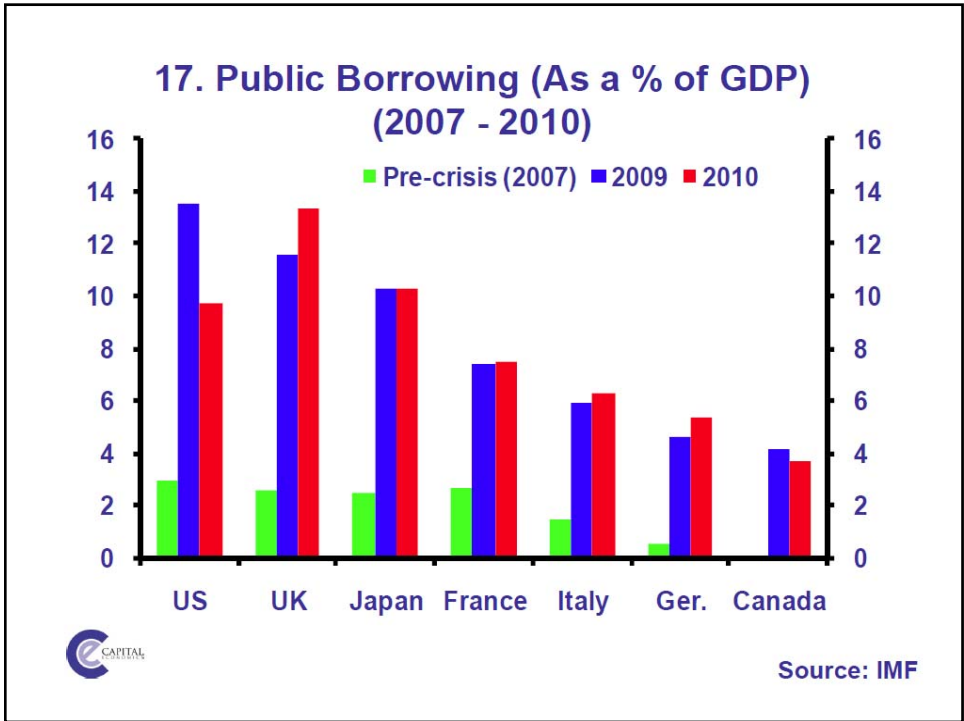


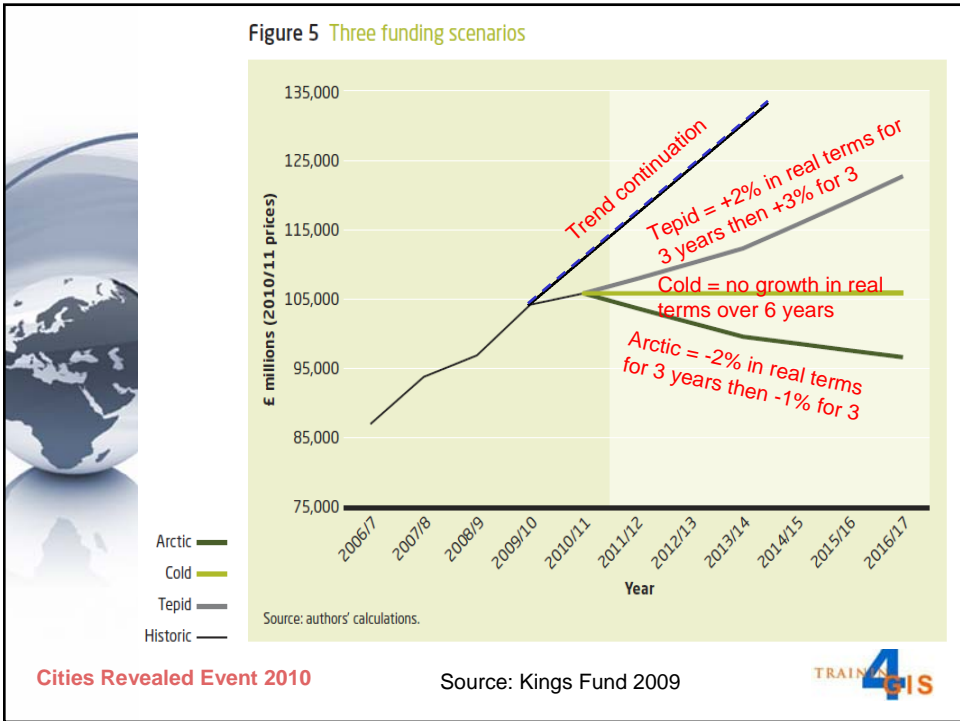
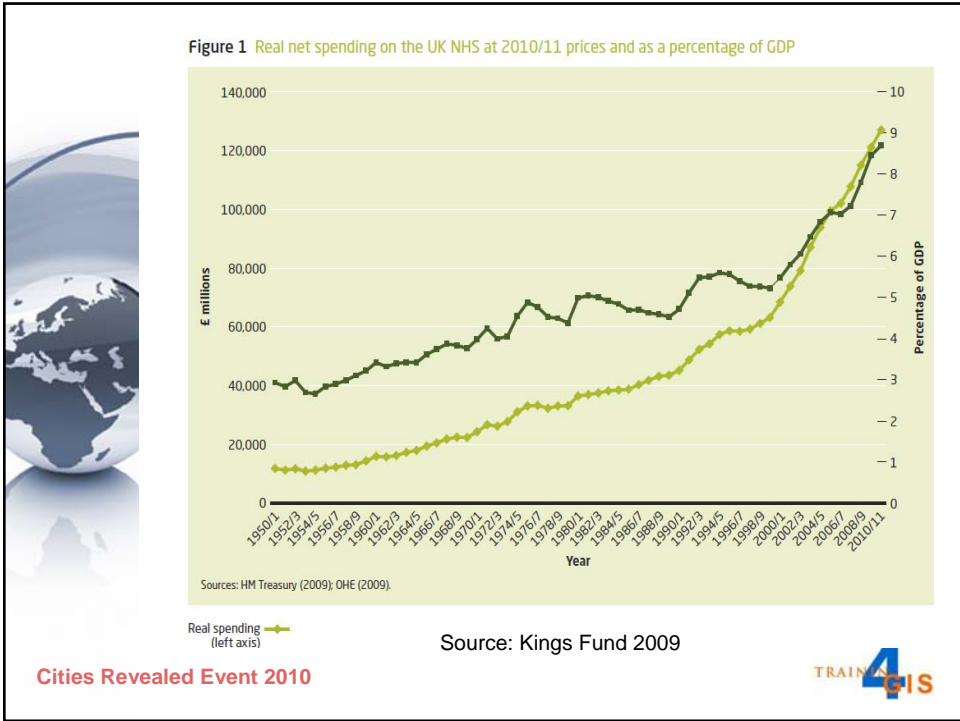


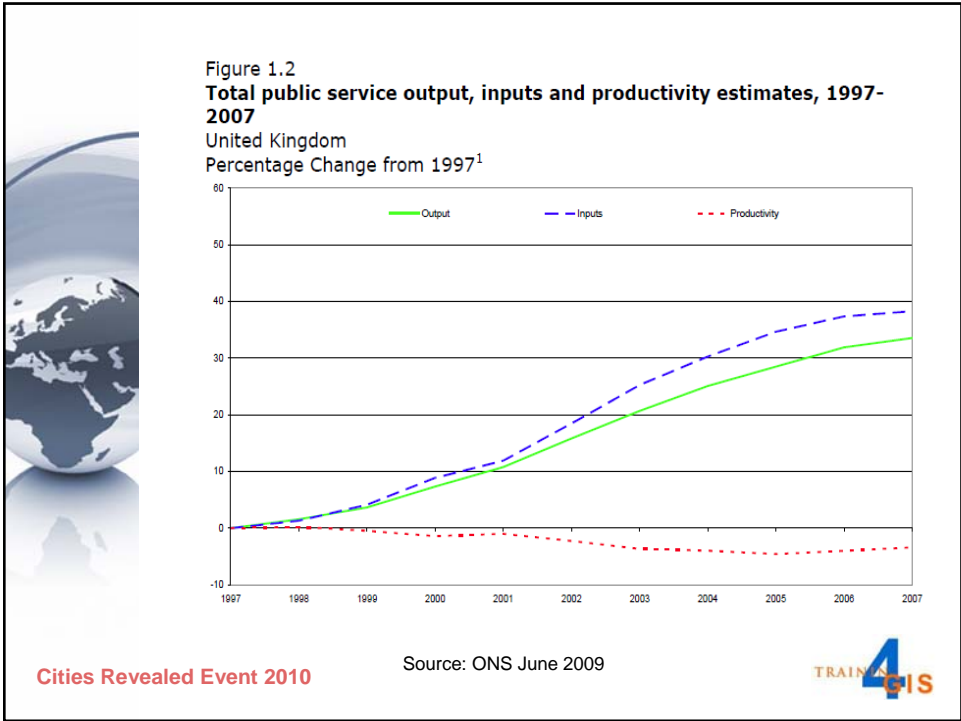
THE CONTEXT: MONEY

Cities Revealed Event 2010

TRAINING 4 GIS







THE REST OF THE CONTEXT

Cities Revealed Event 2010

TRAINING 4 GIS



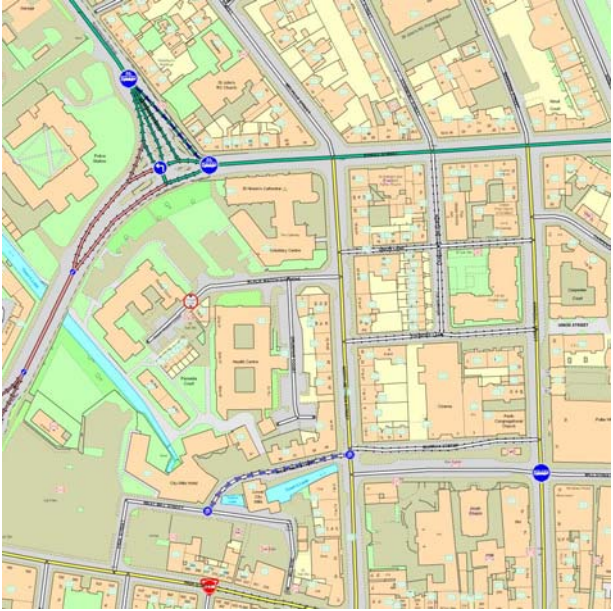

Changes in our world - the drivers

- incredible technology change (satellite imagery, GPS, telecommunications, etc)
- rising expectations of customers
- strong downward pressure on prices
- changing views about role and ability of governments
- 'globalisation' of business

Talk given October 1997

Cities Revealed Event 2010

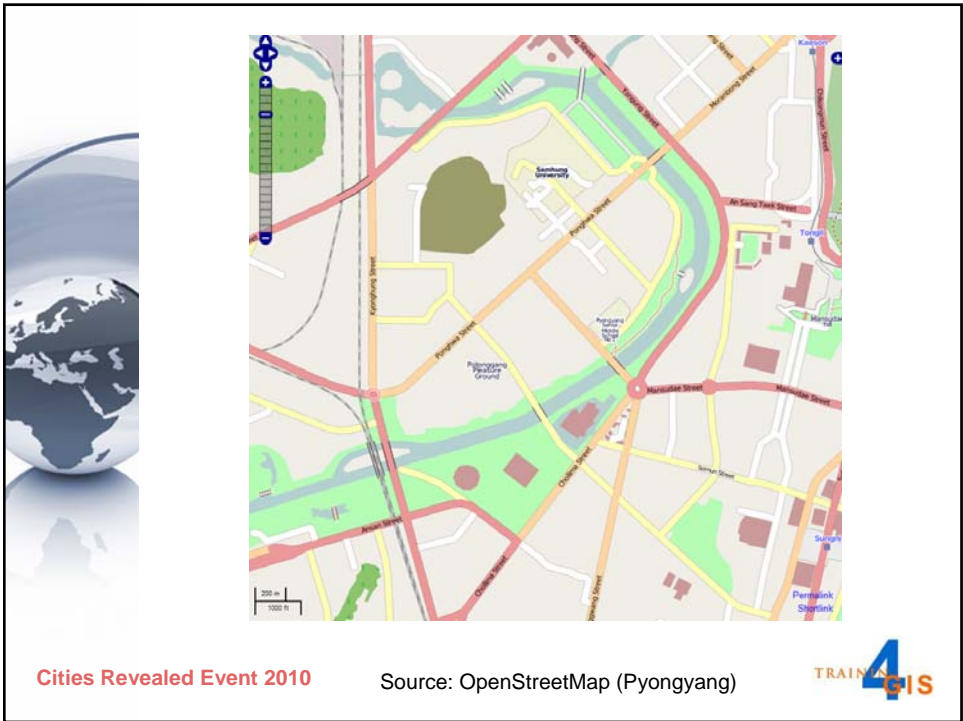
TRAINING 4 GIS



Cities Revealed Event 2010

Source: Ordnance Survey Crown copyright reserved

TRAINING 4 GIS





GIS&S CONTRIBUTIONS

Cities Revealed Event 2010




The UK Location Strategy



'Place' within the heart of decision making

Shared location services

Location infrastructure

Cities Revealed Event 2010



Location Strategy objectives

- know what data we have and avoid duplicating it;
- use common reference data so we know we are talking about the same places;
- share the data easily through common technology, standards and business relationships;
- gain the appropriate skills to support its use; and
- drive strong governance through a UK Location Council to enable change, including the implementation of the UK Location Strategy and the EU INSPIRE Directive.

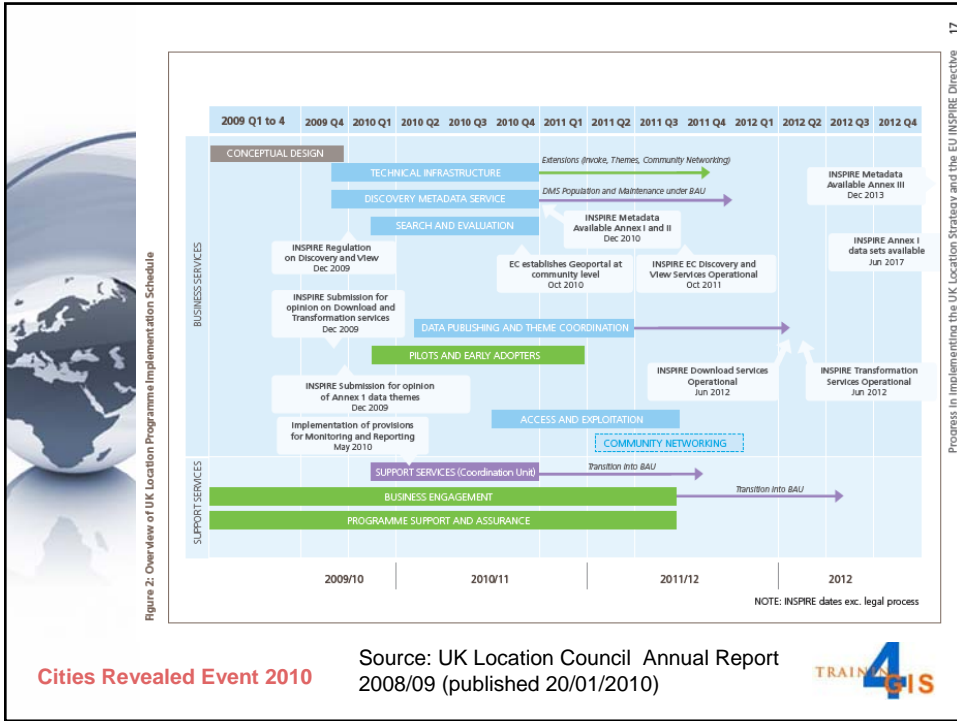
Cities Revealed Event 2010



The screenshot shows the INSPIRE European Geo-Portal website in a Microsoft Internet Explorer browser window. The page has a blue header with the INSPIRE logo and the text 'INSPIRE European Geo-Portal'. Below the header is a navigation bar with links for 'home', 'news', 'events', and 'contact us'. The main content area is divided into several sections: 'Publish Information' (with links for 'Register to publish your data and services' and 'Login'), 'Map Online' (with 'Create Your Map'), 'Search' (with 'Search for Data', 'Search for Services', 'National Portals', and 'Thematic Portals'), 'Geo-Portal at a Glance' (with 'What is the Geo-Portal', 'Guided Tour', 'FAQ', and 'Geo-Portal partners'), 'INSPIRE Initiative' (with 'INSPIRE Background', 'INSPIRE Guidelines', and 'INSPIRE Home'), 'SDI Toolbox' (with 'Standards', 'Resources', 'SDI Initiatives', and 'Useful Links'), and 'Application Areas' (with 'Learn more about our Applications'). There are also two boxes for 'Create your map' and 'Available Data Categories'. A 'Hot Topics' section lists 'Natural resources' and 'Natural and technological risks'. At the bottom, there is a footer with the 'EUROPEAN COMMISSION Joint Research Centre' logo and an 'IMPORTANT LEGAL NOTICE'.

Cities Revealed Event 2010





Cities Revealed Event 2010

Source: UK Location Council Annual Report 2008/09 (published 20/01/2010)



But isn't there a bigger benefit of GIS&S?

Cities Revealed Event 2010

Geography = inequality

“1% of the world’s population owns 50% of the world’s ownable assets”

Life expectancy

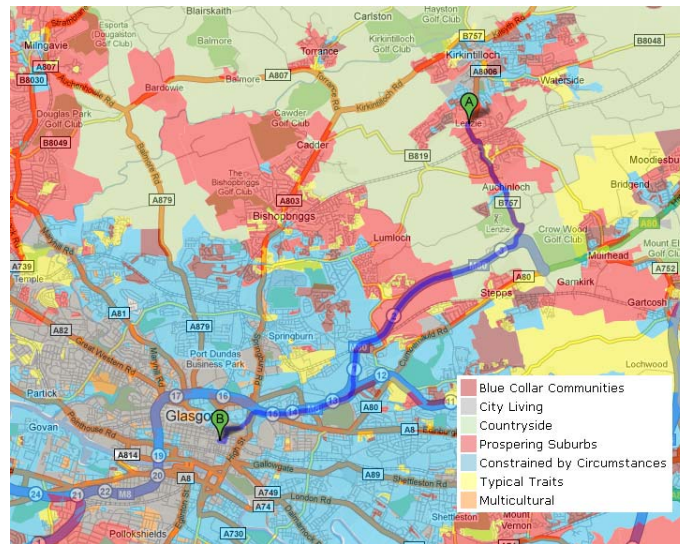
- UK, Glasgow (Calton) 54
- India 62
- United States, Washington, DC (black) 63
- Philippines 64
- Lithuania 65
- Poland 71
- Mexico 72
- United States 75
- Cuba 75
- United Kingdom 77
- Iceland 79
- United States, Montgomery County (white) 80
- UK, Glasgow (Lenzie N.) 82



Cities Revealed Event 2010



The geography of longevity



Cities Revealed Event 2010





Haiti search and rescue



MapAction
Haiti Earthquake - SAM Completed Sectors
Port-au-Prince (19 Jan 2010 14:00)

MapAction Search and Rescue Areas Completed by the 19th January 2010

Hospital Locations


Leval	18° 54' 18" N, 72° 18' 30" W
Spokane	18° 52' 27" N, 72° 17' 30" W
Raymond	18° 51' 24" N, 72° 16' 18" W
Hospital Espoir	18° 52' 30" N, 72° 16' 45" W
Raymond	18° 52' 28" N, 72° 17' 45" W
Columbus	18° 54' 28" N, 72° 17' 45" W
St. Louis Marie	18° 54' 54" N, 72° 16' 30" W
Federation of the Red Cross	18° 54' 48" N, 72° 16' 30" W

Legend

- UN Identification
- Hospital Sites
- Search Sectors
- Sectors
- Search Completed




Cities Revealed

Why GIS&S can help

- Many problems manifested initially through geographical variations.
- Studying the geographical manifestation can help us to propose and test causal factors - and identify possible solutions to the problems.
- The mechanics to tackle problems are normally geographically structured (e.g., administrations that control access or provide resources or that need persuading).
- significant change towards desire for quantifiable evidence to support and justify policy-making.

Cities Revealed Event 2010



We are living in an 'online information society'



Cities Revealed Event 2010

“Public information does not belong to Government, it belongs to the public on whose behalf government is conducted.”

Speech by The Prime Minister on Liberty, October 2007



Public Sector Information (PSI)

- Nearly ubiquitous: >100,000 public sector bodies in UK
- Largest single source of information in Europe
- Basis of 15-25% of all data used in e-commerce trading and information products
- US information industry = 5 x EU industry although economies same size
- UK potential value > £1 billion [OFT 2006]

Cities Revealed Event 2010



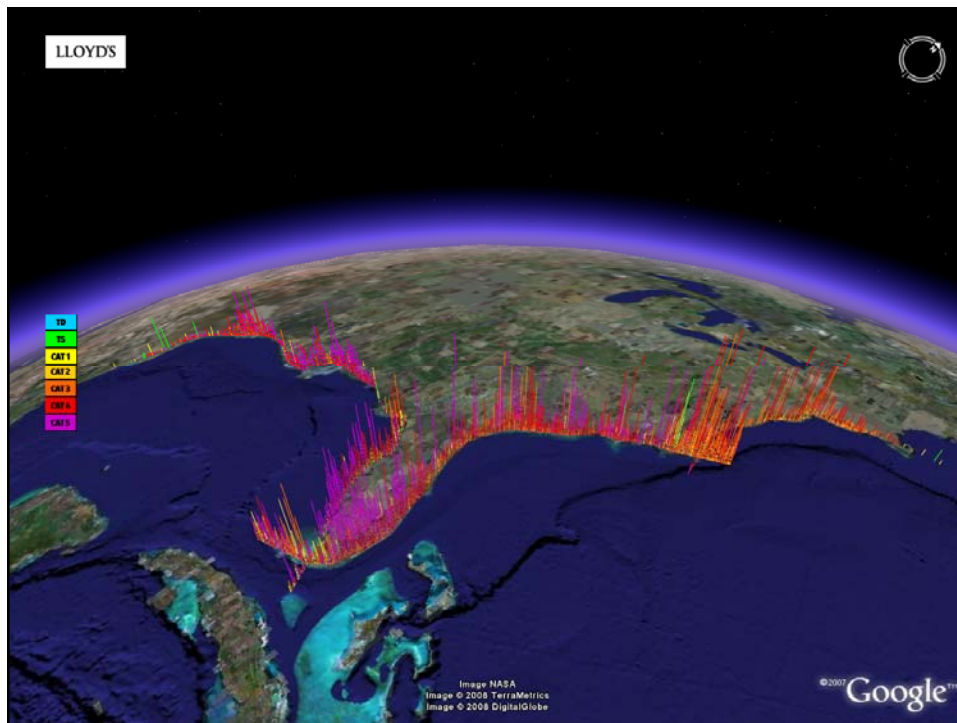
Benefits to public of re-use of (c.f. access to) PSI



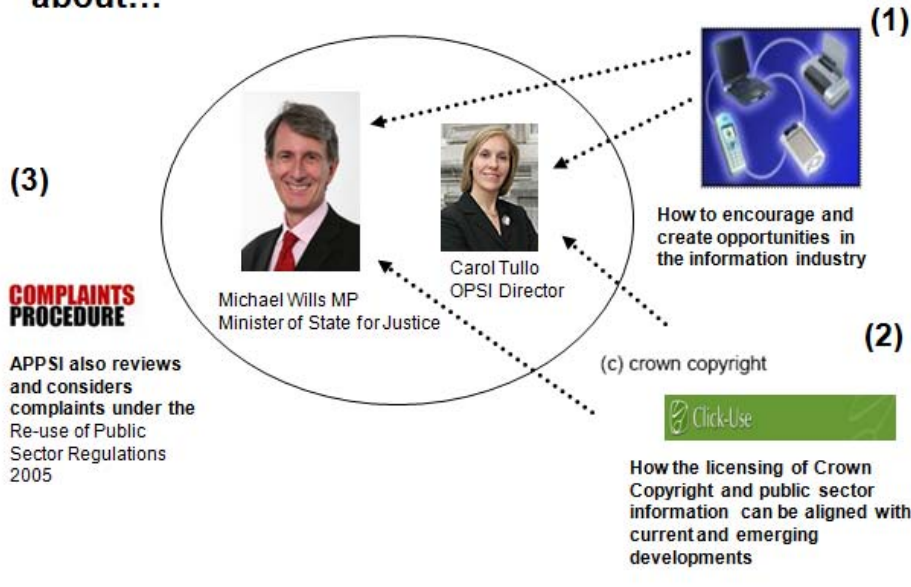
- Underpins democratic accountability (e.g. Government meeting PSA targets, local authority and CLA outcomes, NHS Trusts meeting 4 hour/18 week, MRSA targets, etc)
- Raises awareness of citizens' rights and responsibilities
- Facilitates community activity
- Enhance efficiency e.g. tune services, improve productivity, allocate resources to meet real needs
- Can underpin innovation and hence create jobs and provide choice in services

Cities Revealed Event 2010

TRAINING
4
GIS



APPSI advises Ministers and the Director of OPSI about...



Recent developments in PSI

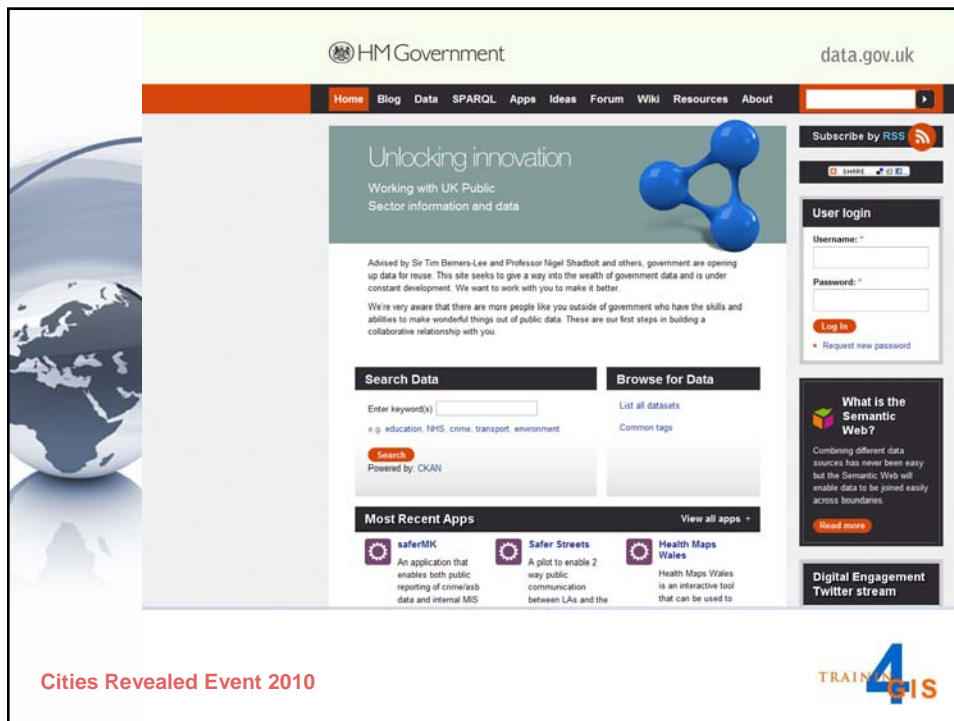
Interest in making PSI more readily available has grown hugely in recent months :

- Various reports e.g. POIR, OFT CUPI, Cambridge study on pricing, Thomas and Walport report on data sharing..
- Much good work by Office of Public Sector Information
- Press campaign led by *The Guardian*
- Shareholder Executive's new business model for Trading Funds (announced in Budget 2009)
- Launch of *Making Public Data Public* initiative mandated by the Prime Minister (June 2009) and led by Sir Tim Berners-Lee and Prof. Nigel Shadbolt

Even more recent developments..

- PM seminar in Downing Street 17 November announcing change in policy for OS data
- Consultation on proposals for OS data 23 December
- Launch of data.gov.uk in beta 22 January 2010
- Government has a period to respond to consultation after it closes on 17 March
- General Election imminent. If on 6 May, Parliament may be prorogued 25 March
- What will be view of new Government given financial situation?

Cities Revealed Event 2010



The screenshot shows the data.gov.uk website interface. At the top, it features the HM Government logo and the site name 'data.gov.uk'. A navigation menu includes links for Home, Blog, Data, SPARQL, Apps, Ideas, Forum, Wiki, Resources, and About. The main content area is titled 'Unlocking innovation' and 'Working with UK Public Sector information and data'. It includes a search bar for 'Search Data' and a 'Browse for Data' section with 'List all datasets' and 'Common tags' links. Below this is a 'Most Recent Apps' section featuring three applications: 'saferMK', 'Safer Streets', and 'Health Maps Wales'. On the right side, there is a 'User login' section with fields for 'Username' and 'Password', and a 'Log in' button. Below the login section is a 'What is the Semantic Web?' section with a 'Read more' link. At the bottom right, there is a 'Digital Engagement Twitter stream' section. The footer of the page includes 'Cities Revealed Event 2010' and the 'TRAIN 4 GIS' logo.

Cities Revealed Event 2010



Consultation on policy options for GI from OS



- Thoughtful and wide-ranging document, sets out policy objectives clearly
- Many trade-offs involved
- Provides 3 (illustrative) options
 - All involve some (mostly raster) map + boundary data to be free. Code-Point included? [Royal Mail IPR]
 - 3rd option based on free data + charging for 'large scales' with higher relative charges for government
 - Implies c£40m subsidy from government?
 - Consequences for existing OS VARs and partners and for competitors?
 - Unintended consequences e.g. vectorisation of 1:10k?

Cities Revealed Event 2010



CONCLUSIONS



Cities Revealed Event 2010



Personal views



- Tho' there is much GIS/GI can do to help improve equity, democracy and efficiency, we have focused on very operational matters
- OS consultation an important development – may have implications beyond OS (e.g. Met Office)
- New model (mark 2) for OS has big implications for partners, competitors
- New model might yet founder on timing? Postcodes off limits?

Cities Revealed Event 2010



Final thoughts



- More happened in last 6 months in UK PSI than in last 5 years
- Public finances and (un)certainly of benefits of policy change a major factor
- Different policy interactions complex
- Senior level interventions (EU, PM) – not bottom up logic – make things happen

Cities Revealed Event 2010





If you do nothing else, read/monitor these:

- <http://www.communities.gov.uk/documents/corporate/pdf/1411177.pdf>
- www.appsi.gov.uk
- www.opsi.gov.uk
- <http://data.gov.uk/>

THANK YOU FOR LISTENING